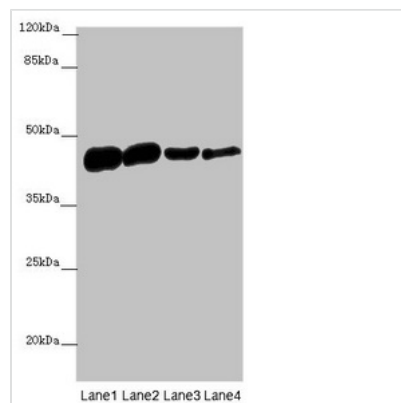




# ACTA1 Antibody

<b>Product Code</b>	CSB-PA001205LA01HU
<b>Storage</b>	Upon receipt, store at -20°C or -80°C. Avoid repeated freeze.
<b>Uniprot No.</b>	P68133
<b>Immunogen</b>	Recombinant Human Actin, alpha skeletal muscle protein (3-377AA)
<b>Raised In</b>	Rabbit
<b>Species Reactivity</b>	Human, Mouse, Rat
<b>Tested Applications</b>	ELISA, WB, IHC; Recommended dilution: WB:1:500-2000, IHC:1:20-1:200
<b>Relevance</b>	Actins are highly conserved proteins that are involved in various types of cell motility and are ubiquitously expressed in all eukaryotic cells.
<b>Form</b>	Liquid
<b>Conjugate</b>	Non-conjugated
<b>Storage Buffer</b>	Preservative: 0.03% Proclin 300 Constituents: 50% Glycerol, 0.01M PBS, PH 7.4
<b>Purification Method</b>	>95%, Protein G purified
<b>Isotype</b>	IgG
<b>Clonality</b>	Polyclonal
<b>Alias</b>	Actin, alpha skeletal muscle (Alpha-actin-1) [Cleaved into: Actin, alpha skeletal muscle, intermediate form], ACTA1, ACTA
<b>Species</b>	Human
<b>Research Area</b>	Signal Transduction
<b>Target Names</b>	ACTA1

## Image



### Western blot

All lanes: ACTA1 antibody at 16 µg/ml

Lane 1: Rat heart tissue

Lane 2: Mouse skeletal muscle tissue

Lane 3: Human placenta tissue

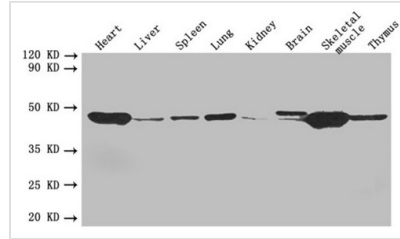
Lane 4: CEM whole cell lysate

Secondary

Goat polyclonal to rabbit IgG at 1/10000 dilution

Predicted band size: 42 kDa

Observed band size: 42 kDa



**Western blot**

All lanes: ACTA1 antibody at 4 µg/ml

Lane 1: Mouse heart tissue

Lane 2: Mouse liver tissue

Lane 3: Mouse spleen tissue

Lane 4: Mouse lung tissue

Lane 5: Mouse kidney tissue

Lane 6: Mouse brain tissue

Lane 7: Mouse skeletal muscle tissue

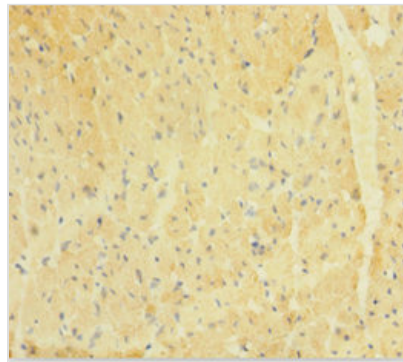
Lane 8: Mouse thymus tissue

Secondary

Goat polyclonal to rabbit IgG at 1/10000 dilution

Predicted band size: 42 kDa

Observed band size: 42 kDa



Immunohistochemistry of paraffin-embedded

human heart tissue using CSB-

PA001205LA01HU at dilution of 1:100



Immunohistochemistry of paraffin-embedded

human skeletal muscle tissue using CSB-

PA001205LA01HU at dilution of 1:100