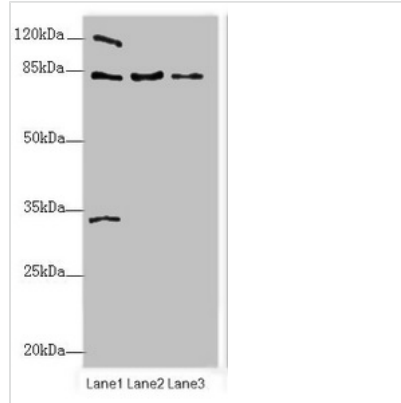




HSP90AB1 Antibody

Product Code	CSB-PA00109A0Rb
Storage	Upon receipt, store at -20°C or -80°C. Avoid repeated freeze.
Uniprot No.	P08238
Immunogen	Recombinant Human Human Heat shock protein HSP 90-beta protein (150-355AA)
Raised In	Rabbit
Species Reactivity	Human, Mouse, Rat, Zebrafish
Tested Applications	ELISA, WB, IHC, IF; Recommended dilution: WB:1:500-1:5000, IHC:1:100-1:500, IF:1:50-1:500
Relevance	Molecular chaperone that promotes the maturation, structural maintenance and proper regulation of specific target proteins involved for instance in cell cycle control and signal transduction. Undergoes a functional cycle that is linked to its ATPase activity. This cycle probably induces conformational changes in the client proteins, thereby causing their activation. Interacts dynamically with various co-chaperones that modulate its substrate recognition, ATPase cycle and chaperone function.
Form	Liquid
Conjugate	Non-conjugated
Storage Buffer	Preservative: 0.03% Proclin 300 Constituents: 50% Glycerol, 0.01M PBS, PH 7.4
Purification Method	>95%, Protein G purified
Isotype	IgG
Clonality	Polyclonal
Alias	Heat shock protein HSP 90-beta (HSP 90) (Heat shock 84 kDa) (HSP 84) (HSP84), HSP90AB1, HSP90B HSPC2 HSPCB
Species	Human
Research Area	Signal Transduction
Target Names	HSP90AB1
Image	



Western blot

All lanes: Hsp90ab1 antibody at 2µg/ml

Lane 1: Mouse lung tissue

Lane 2: Rat lung tissue

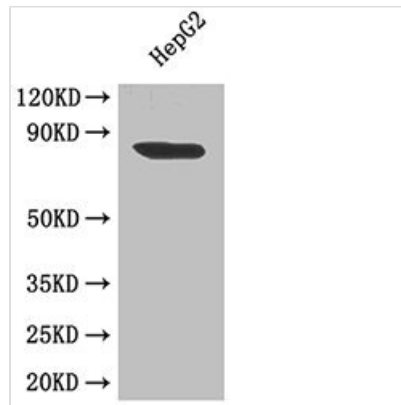
Lane 3: Zebrafish lysate

Secondary

Goat polyclonal to Rabbit IgG at 1/10000 dilution

Predicted band size: 83 kDa

Observed band size: 83, 120, 32 kDa



Western Blot

Positive WB detected in: HepG2 cell

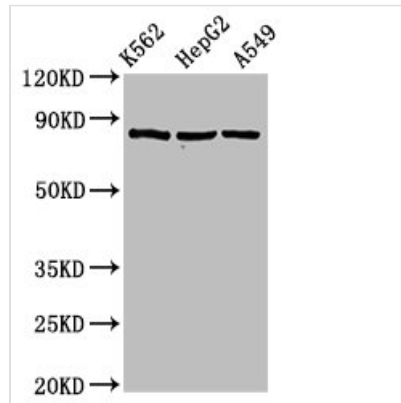
All lanes: CHD4 antibody at 3µg/ml

Secondary

Goat polyclonal to rabbit IgG at 1/50000 dilution

Predicted band size: 83 kDa

Observed band size: 83 kDa



Western Blot

Positive WB detected in: K562 whole cell lysate,

HepG2 whole cell lysate, A549 whole cell lysate

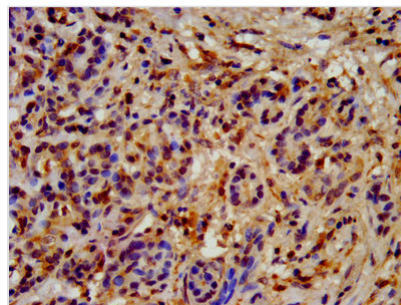
All lanes:HSP90AB1 antibody at 2µg/ml

Secondary

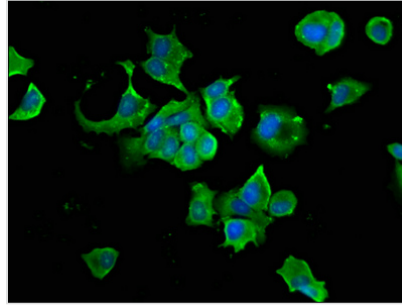
Goat polyclonal to rabbit IgG at 1/50000 dilution

Predicted band size: 84 kDa

Observed band size: 84 kDa



IHC image of CSB-PA00109A0Rb diluted at 1:200 and staining in paraffin-embedded human pancreatic cancer performed on a Leica Bond™ system. After dewaxing and hydration, antigen retrieval was mediated by high pressure in a citrate buffer (pH 6.0). Section was blocked with 10% normal goat serum 30min at RT. Then primary antibody (1% BSA) was incubated at 4°C overnight. The primary is detected by a biotinylated secondary antibody and visualized tissue using an HRP conjugated SP system.



Immunofluorescence staining of MCF-7 cells with CSB-PA00109A0Rb at 1:66, counter-stained with DAPI. The cells were fixed in 4% formaldehyde, permeabilized tissue using 0.2% Triton X-100 and blocked in 10% normal Goat Serum. The cells were then incubated with the antibody overnight at 4°C. The secondary antibody was Alexa Fluor 488-conjugated AffiniPure Goat Anti-Rabbit IgG (H+L).