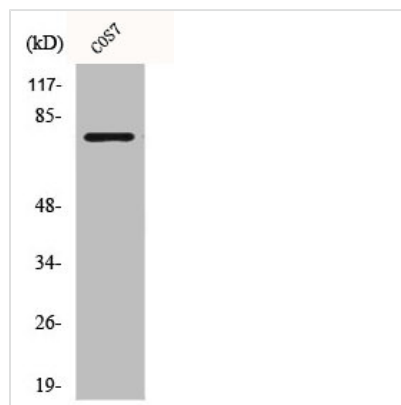




BMX Antibody

Product Code	CSB-PA001036
Storage	Upon receipt, store at -20°C or -80°C. Avoid repeated freeze.
Uniprot No.	P51813
Immunogen	Synthesized peptide derived from the N-terminal region of Human Bmx.
Raised In	Rabbit
Species Reactivity	Human,Mouse,Monkey
Tested Applications	WB,IHC,IF,ELISA;WB:1/500-1/2000.IHC:1/100-1/300.IF:1/200-1/1000.ELISA:1/20000
Form	Liquid
Conjugate	Non-conjugated
Storage Buffer	Liquid in PBS containing 50% glycerol, 0.5% BSA and 0.02% sodium azide.
Purification Method	The antibody was affinity-purified from rabbit antiserum by affinity-chromatography using epitope-specific immunogen.
Isotype	IgG
Alias	BMX; Cytoplasmic tyrosine-protein kinase BMX; Bone marrow tyrosine kinase gene in chromosome X protein; Epithelial and endothelial tyrosine kinase; ETK; NTK38
Species	Homo sapiens (Human)
Target Names	BMX

Image



Western Blot analysis of COS7 cells using Bmx Polyclonal Antibody