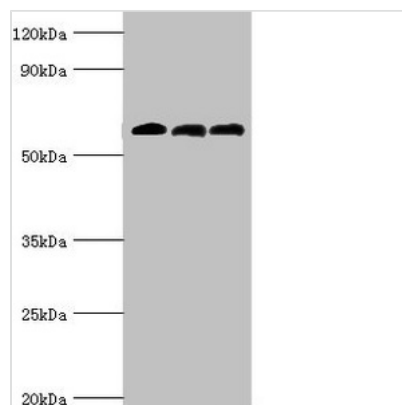




ABAT Antibody

| | |
|----------------------------|---|
| Product Code | CSB-PA001032ESR1HU |
| Storage | Upon receipt, store at -20°C or -80°C. Avoid repeated freeze. |
| Uniprot No. | P80404 |
| Immunogen | Recombinant Human 4-aminobutyrate aminotransferase, mitochondrial protein (29-300AA) |
| Raised In | Rabbit |
| Species Reactivity | Human, Mouse, Rat |
| Tested Applications | ELISA, WB, IHC; Recommended dilution: WB:1:500-1:5000, IHC:1:20-1:200 |
| Relevance | Catalyzes the conversion of gamma-aminobutyrate and L-beta-aminoisobutyrate to succinate semialdehyde and methylmalonate semialdehyde, respectively. Can also convert delta-aminovalerate and beta-alanine. |
| Form | Liquid |
| Conjugate | Non-conjugated |
| Storage Buffer | PBS with 0.02% sodium azide, 50% glycerol, pH7.3. |
| Purification Method | Antigen Affinity purified |
| Isotype | IgG |
| Clonality | Polyclonal |
| Alias | 4-aminobutyrate aminotransferase, mitochondrial (EC 2.6.1.19) ((S)-3-amino-2-methylpropionate transaminase) (EC 2.6.1.22) (GABA aminotransferase) (GABA-AT) (Gamma-amino-N-butyrate transaminase) (GABA transaminase) (GABA-T) (L-AIBAT), ABAT, GABAT |
| Species | Human |
| Research Area | Neuroscience |
| Target Names | ABAT |

Image



Western blot

All lanes: 4-aminobutyrate aminotransferase, mitochondrial antibody at 10µg/ml

Lane 1: Rat liver tissue

Lane 2: Mouse pancreatic tissue

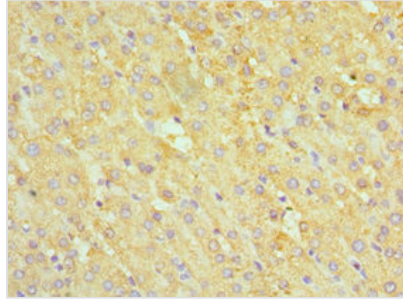
Lane 3: Mouse kidney tissue

Secondary

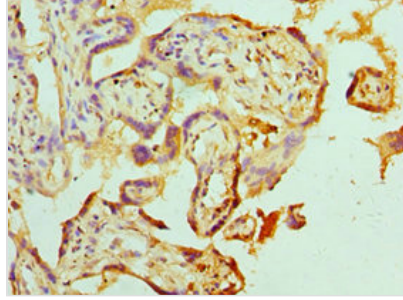
Goat polyclonal to rabbit IgG at 1/10000 dilution

Predicted band size: 56 kDa

Observed band size: 56 kDa



Immunohistochemistry of paraffin-embedded human liver tissue using CSB-PA001032ESR1HU at dilution of 1:100



Immunohistochemistry of paraffin-embedded human placenta tissue using CSB-PA001032ESR1HU at dilution of 1:100