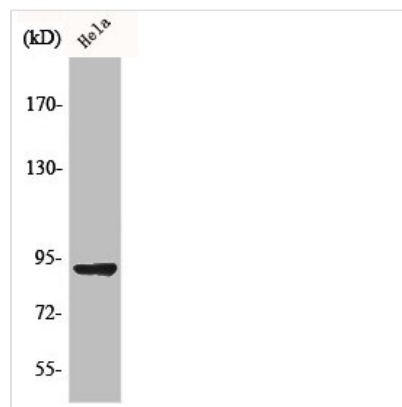




AMPD2 Antibody

Product Code	CSB-PA000869
Storage	Upon receipt, store at -20°C or -80°C. Avoid repeated freeze.
Uniprot No.	Q01433
Immunogen	Synthesized peptide derived from the Internal region of Human AMPD2.
Raised In	Rabbit
Species Reactivity	Human,Mouse,Rat
Tested Applications	WB,ELISA;WB:1/500-1/2000.ELISA:1/5000
Form	Liquid
Conjugate	Non-conjugated
Storage Buffer	Liquid in PBS containing 50% glycerol, 0.5% BSA and 0.02% sodium azide.
Purification Method	The antibody was affinity-purified from rabbit antiserum by affinity-chromatography using epitope-specific immunogen.
Isotype	IgG
Alias	AMPD2; AMP deaminase 2; AMP deaminase isoform L
Species	Homo sapiens (Human)
Target Names	AMPD2

Image



Western Blot analysis of COLO205 cells using AMPD2 Polyclonal Antibody