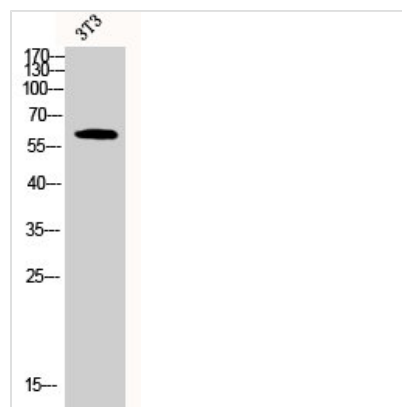




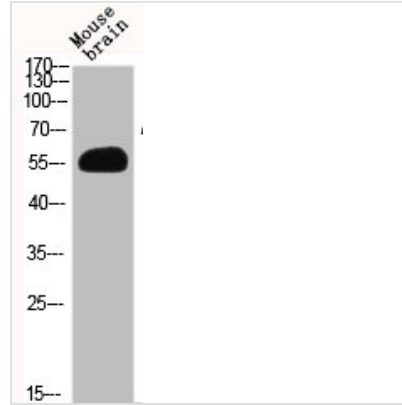
# AKT2 Antibody

<b>Product Code</b>	CSB-PA000859
<b>Storage</b>	Upon receipt, store at -20°C or -80°C. Avoid repeated freeze.
<b>Uniprot No.</b>	P31751
<b>Immunogen</b>	Synthesized peptide derived from Human Akt2 around the non-phosphorylation site of S474.
<b>Raised In</b>	Rabbit
<b>Species Reactivity</b>	Human,Mouse,Rat
<b>Tested Applications</b>	WB,IHC,IF,ELISA;WB:1/500-1/2000.IHC:1/100-1/300.IF:1/200-1/1000.ELISA:1/10000
<b>Form</b>	Liquid
<b>Conjugate</b>	Non-conjugated
<b>Storage Buffer</b>	Liquid in PBS containing 50% glycerol, 0.5% BSA and 0.02% sodium azide.
<b>Purification Method</b>	The antibody was affinity-purified from rabbit antiserum by affinity-chromatography using epitope-specific immunogen.
<b>Isotype</b>	IgG
<b>Alias</b>	AKT2; RAC-beta serine/threonine-protein kinase; Protein kinase Akt-2; Protein kinase B beta; PKB beta; RAC-PK-beta
<b>Species</b>	Homo sapiens (Human)
<b>Target Names</b>	AKT2

## Image



Western Blot analysis of 3T3 cells using Akt2 Polyclonal Antibody



Western Blot analysis of MOUSE-BRAIN cells using Akt2 Polyclonal Antibody