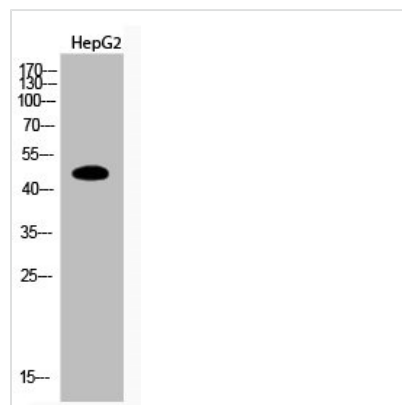




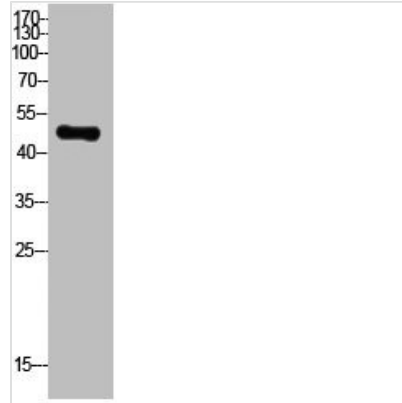
Acetyl-PTEN (K402) Antibody

| | |
|----------------------------|---|
| Product Code | CSB-PA000142 |
| Storage | Upon receipt, store at -20°C or -80°C. Avoid repeated freeze. |
| Uniprot No. | P60484 |
| Immunogen | Synthesized peptide derived from the Human PTEN around the acetylation site of K402. |
| Raised In | Rabbit |
| Species Reactivity | Human,Mouse,Rat |
| Tested Applications | WB,ELISA;WB:1/500-1/2000.ELISA:1/20000 |
| Form | Liquid |
| Conjugate | Non-conjugated |
| Storage Buffer | Liquid in PBS containing 50% glycerol, 0.5% BSA and 0.02% sodium azide. |
| Purification Method | The antibody was affinity-purified from rabbit antiserum by affinity-chromatography using epitope-specific immunogen. |
| Isotype | IgG |
| Alias | PTEN; MMAC1; TEP1; Phosphatidylinositol 3,4,5-trisphosphate 3-phosphatase and dual-specificity protein phosphatase PTEN; Mutated in multiple advanced cancers 1; Phosphatase and tensin homolog |
| Species | Homo sapiens (Human) |
| Target Names | PTEN |

Image



Western Blot analysis of HepG2 cells using Acetyl-PTEN (K402) Polyclonal Antibody



Western Blot analysis of HepG2 cells using Acetyl-PTEN (K402) Polyclonal Antibody