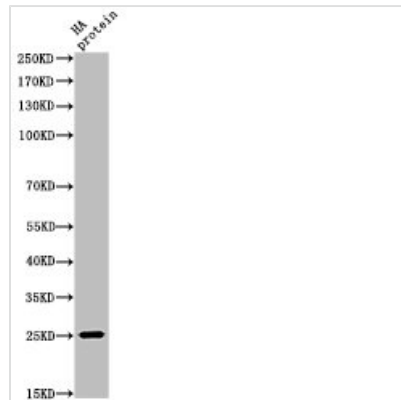




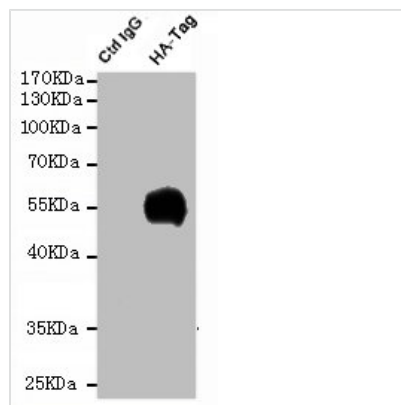
# HA-tag Antibody

<b>Product Code</b>	CSB-PA000087
<b>Storage</b>	Upon receipt, store at -20°C or -80°C. Avoid repeated freeze.
<b>Immunogen</b>	HA synthetic peptide conjugated to KLH.
<b>Raised In</b>	Rabbit
<b>Tested Applications</b>	WB,IP,ELISA;WB:1/1000-1/3000.ELISA:1/20000
<b>Form</b>	Liquid
<b>Conjugate</b>	Non-conjugated
<b>Storage Buffer</b>	Liquid in PBS containing 50% glycerol, 0.5% BSA and 0.05% sodium azide.
<b>Purification Method</b>	The antibody was affinity-purified from rabbit antiserum by affinity-chromatography using epitope-specific immunogen.
<b>Isotype</b>	IgG
<b>Alias</b>	HA epitope tag; hemagglutinin

## Image



Western Blot analysis of HA-protein cells using HA-tag Polyclonal Antibody



IP analysis of HA-tag Polyclonal Antibody