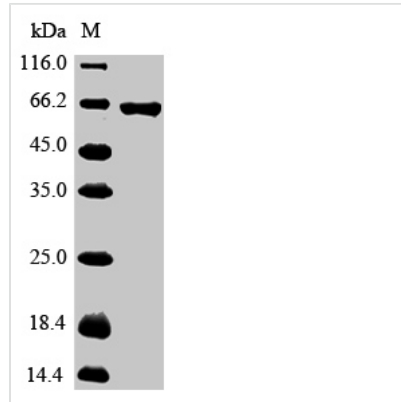




# Recombinant Pan troglodytes Glypican-3 (GPC3)

<b>Product Code</b>	CSB-MP009705EQV
<b>Relevance</b>	Cell surface proteoglycan that bears heparan sulfate. Inhibits the dipeptidyl peptidase activity of DPP4. May be involved in the suppression/modulation of growth in the predominantly mesodermal tissues and organs. May play a role in the modulation of IGF2 interactions with its receptor and thereby modulate its function. May regulate growth and tumor predisposition (By similarity).
<b>Storage</b>	The shelf life is related to many factors, storage state, buffer ingredients, storage temperature and the stability of the protein itself. Generally, the shelf life of liquid form is 6 months at -20°C/-80°C. The shelf life of lyophilized form is 12 months at -20°C/-80°C.
<b>Uniprot No.</b>	A5A6P7
<b>Storage Buffer</b>	Tris-based buffer,50% glycerol
<b>Alias</b>	GTR2-2 Intestinal protein OCI-5 MXR7
<b>Product Type</b>	Recombinant Protein
<b>Species</b>	Pan troglodytes (Chimpanzee)
<b>Purity</b>	Greater than 90% as determined by SDS-PAGE.
<b>Sequence</b>	QPPPPPPDATCHQVRSFFQRLQPGLKWVPETPVPGSDDLQVCLPKGPTCCSR KMEEKYQLTARLNMEQLLQSASKELKFLIIQNAAVFQEA FEIVVRHAKNYTNAM FKNNYPSLTPQAFEFVGEFFTDVSLYLIGSDINVDDMVNELFDSLFPVIYTQLM NPGLPDSALDINECLRGARRDLKVFNGFPKLIMTQVSKSLQVTRIFLQALNLGIE VINTTDHLKFSKDCGRMLTRMWYCSYCQGLMMVKPCGGYCNVVMQGC MAG VVEIDKYWREYILSLEELVNGMYRIYDMENVLLGLFSTIHDSIQYVQKNAGLTT TIGKLCAHSQQRQYRSAYYPEDLFIDKKVLKVARVEHEETLSSRRRELIQKLKS FISFYSALPGYICSHSPVAENDTLCWNGQELVERYSQKAARNGMKNQFNLHEL KMKGPEPVVSIIDKLKHINQLLRTMSVPKGRVLDKNLDEEGFESGDCGDDDED ECIGGSGDGMKVKVKNQLRFLAELAYDLDVDDAPGSNQATPKDNEISTFHNL GNVHS
<b>Research Area</b>	Cancer
<b>Source</b>	Mammalian cell
<b>Gene Names</b>	GPC3
<b>Expression Region</b>	25-560aa
<b>Notes</b>	Repeated freezing and thawing is not recommended. Store working aliquots at 4°C for up to one week.
<b>Tag Info</b>	N-terminal 6xHis-tagged
<b>Mol. Weight</b>	64.9kDa
<b>Protein Description</b>	Full Length of Mature Protein
<b>Image</b>	



(Tris-Glycine gel) Discontinuous SDS-PAGE (reduced) with 5% enrichment gel and 15% separation gel.