

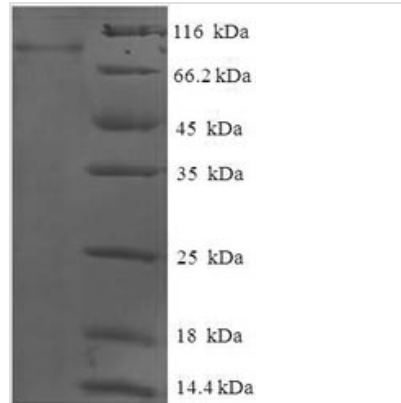


# Recombinant Human Glucokinase regulatory protein(GCKR)

<b>Product Code</b>	CSB-EP622767HU
<b>Relevance</b>	Inhibits glucokinase (GCK) by forming an inactive complex with this enzyme. The affinity of GCKR for GCK is modulated by fructose metabolites: GCKR with bound fructose 6-phosphate has increased affinity for GCK, while GCKR with bound fructose 1-phosphate has strongly decreased affinity for GCK and does not inhibit GCK activity.
<b>Storage</b>	The shelf life is related to many factors, storage state, buffer ingredients, storage temperature and the stability of the protein itself. Generally, the shelf life of liquid form is 6 months at -20°C/-80°C. The shelf life of lyophilized form is 12 months at -20°C/-80°C.
<b>Uniprot No.</b>	Q14397
<b>Storage Buffer</b>	Tris-based buffer,50% glycerol
<b>Product Type</b>	Recombinant Protein
<b>Species</b>	Homo sapiens (Human)
<b>Purity</b>	Greater than 90% as determined by SDS-PAGE.
<b>Sequence</b>	MPGTKRFQHVIVETPEPGKWELSGYEAAPVITEKSNPLTQDLKADAENIVRLLG QCDAEIFQEEGQALSTYQRLYSESLTTMVQVAGKVQEVLPDGGGLVVLSSG GTSGRMAFLMSVSNQLMKGLGQKPLYTYLIAGGDRSVVASREGTEDSALHG IEELKKVAAGKKRVIVIGISVGLSAPFVAGQMDCCMNNTAVFLPVLVGFNPVSM ARNDPIEDWSSTFRQVAERMQKMQEKQKAFVLNPAIGPEGLSGSSRMKGGG ATKILLETLLAAHKTVDQGIAASQRCLLEILRTFERAHQVTYSQSPKIATLMKSV STSLEKKGHVYLVGWQTLGIIAIMDGVCEIHTFGADFRDVRGFLIGDHSDFNFQ KAELTNQGPQFTFSQEDFLTSILPSLTEIDTVVFIFTLDDNLTEVQTIQVKEKT NHIQALAHSTVGQTLPIPLKLFPSIISITWPLLLFFEYEGNFIQKFQRELSTKWVL NTVSTGAHVLLGKILQNHMLDLRISNSKLFWRALAMLQRFSGQSKARCIESLLR AIHFPQPLSDDIRAAPISCHVQVAHEKEQVIPIALLSLLFRCSITEAQAHLAAAPS VCEAVRSALAGPGQKRTADPLEILEPDVQ
<b>Lead Time</b>	3-7 business days
<b>Research Area</b>	Signal Transduction
<b>Source</b>	E.coli
<b>Gene Names</b>	GCKR
<b>Expression Region</b>	1-625aa
<b>Notes</b>	Repeated freezing and thawing is not recommended. Store working aliquots at 4°C for up to one week.
<b>Tag Info</b>	N-terminal 6xHis-SUMO-tagged
<b>Mol. Weight</b>	84.7kDa

**Protein Description**

Full Length

**Image**

(Tris-Glycine gel) Discontinuous SDS-PAGE (reduced) with 5% enrichment gel and 15% separation gel.