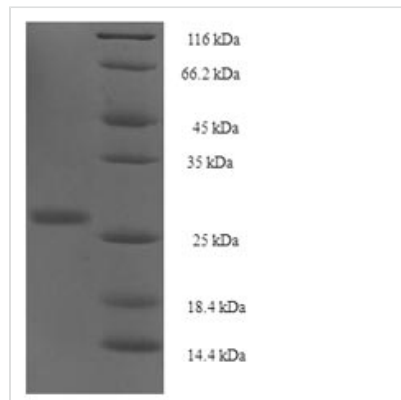




Recombinant Human Protein yippee-like 1(YPEL1)

Product Code	CSB-EP026270HU
Storage	The shelf life is related to many factors, storage state, buffer ingredients, storage temperature and the stability of the protein itself. Generally, the shelf life of liquid form is 6 months at -20°C/-80°C. The shelf life of lyophilized form is 12 months at -20°C/-80°C.
Uniprot No.	O60688
Storage Buffer	Tris-based buffer,50% glycerol
Product Type	Recombinant Protein
Species	Homo sapiens (Human)
Purity	Greater than 90% as determined by SDS-PAGE.
Sequence	MVKMTKSKTFQAYLPNCHRTYSCIHCRANLANHDELISKSFQGSQGRAYLFNS VVNVGCGPAEERVLLTGLHAVADIYCENCKTTLGWKYEHAFAESSQKYKEGKFII ELAHMIKDNNGWE
Research Area	Epigenetics and Nuclear Signaling
Source	E.coli
Gene Names	YPEL1
Expression Region	1-119aa
Notes	Repeated freezing and thawing is not recommended. Store working aliquots at 4°C for up to one week.
Tag Info	N-terminal 6xHis-SUMO-tagged
Mol. Weight	29.6kDa
Protein Description	Full Length

Image



(Tris-Glycine gel) Discontinuous SDS-PAGE (reduced) with 5% enrichment gel and 15% separation gel.