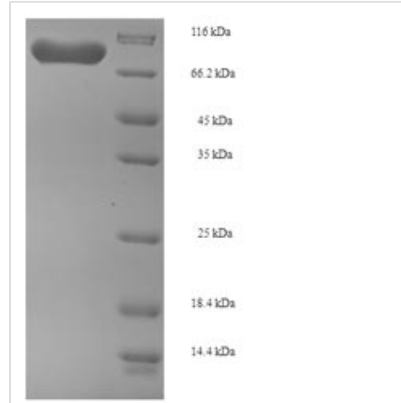




Recombinant Human Phosphoglucomutase-1 (PGM1)

Product Code	CSB-EP017866HU
Relevance	This enzyme participates in both the breakdown and synthesis of glucose.
Storage	The shelf life is related to many factors, storage state, buffer ingredients, storage temperature and the stability of the protein itself. Generally, the shelf life of liquid form is 6 months at -20°C/-80°C. The shelf life of lyophilized form is 12 months at -20°C/-80°C.
Uniprot No.	P36871
Storage Buffer	Tris-based buffer, 50% glycerol
Alias	Glucose phosphomutase 1
Product Type	Recombinant Protein
Species	Homo sapiens (Human)
Purity	Greater than 90% as determined by SDS-PAGE.
Sequence	MVKIVTVKTQAYQDQKPGTSGLRKRVKVFQSSANYAENFIQSIISTVEPAQRQE ATLVVGGDGRFYMKEAIQLIARIAAANGIGRLVIGQNGILSTPAVSCIIRKIKAIIGG IILTASHNPGGPNNGDFGIKFNISNGGPAPEAITDKIFQISKTIIEYAVCPDLKVDL GVLGKQQFDLENKFKPFTVEIVDSVEAYATMLRSIFDFSALKELLSGPNRLKIRI DAMHG VVGPYVKKILCEELGAPANSAVNCPLEDFGGHHPDPNLTYAADLVE TMKSGEHDFGAAFDGDGDRNMILGKHGFFVNPSSVAVIAANIFSIPYFQQTG VRGFARSMPTSGALDRVASATKIALYETPTGWKFFGNLMDASKLSLCGEESF GTGSDHIREKDGLWAVLAWLSILATRKQSVEDILKDHQWQYGRNFFTRYDYEE VEAEGANKMMKDLEALMFD RSFVGKQFSANDKVYTVEKADNFEYSDPVDGSI SRNQGLRLIFTDGSRIVFRLSGTGSAGATIRLYIDSYEKDVAKINQDPQVMLAPL ISIALKVSQ LQERTGRTAPT VIT
Research Area	Metabolism
Source	E.coli
Gene Names	PGM1
Expression Region	1-562aa
Notes	Repeated freezing and thawing is not recommended. Store working aliquots at 4°C for up to one week.
Tag Info	N-terminal 6xHis-SUMO-tagged
Mol. Weight	77.4kDa
Protein Description	Full Length
Image	



(Tris-Glycine gel) Discontinuous SDS-PAGE (reduced) with 5% enrichment gel and 15% separation gel.