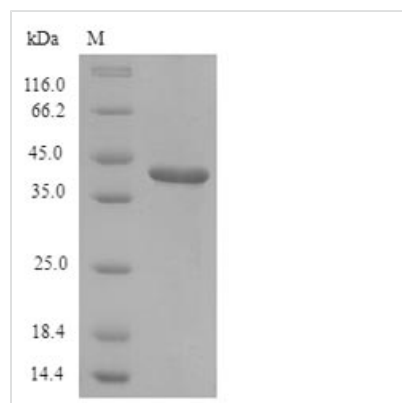




Recombinant Rat Lumican(Lum)

Product Code	CSB-EP013234RA
Storage	The shelf life is related to many factors, storage state, buffer ingredients, storage temperature and the stability of the protein itself. Generally, the shelf life of liquid form is 6 months at -20°C/-80°C. The shelf life of lyophilized form is 12 months at -20°C/-80°C.
Uniprot No.	P51886
Storage Buffer	Tris-based buffer,50% glycerol
Alias	Keratan sulfate proteoglycan lumican Short name: KSPG lumican
Product Type	Recombinant Protein
Species	Rattus norvegicus (Rat)
Purity	Greater than 90% as determined by SDS-PAGE.
Sequence	QYYDYDAPLFMYGELSPNCAPECNCPHSYPTAMYCDDLKLSVPMVPPGIKY LYLRNNQIDHIDEKAFENVTDLQWLILDHNLLENSKIKGKVFSLKQLKHLHINY NNLTESVGPLPKSLQDLQLANNKISKLGSDGLVNLTFIYLQHNQLKEEAVSAS LKGLKSLEYLDLSFNQMSKLPAGLPTSLLTLYLDNNKITNIPDEYFNRFTGLQYL RLSHNELADSGVPGNSFNISLLELDLSYNKLSIPTVNELENYYLEVVKLEKF DVKSFCKILGPLSYSKIKHLRLDGNPLTQSSLPPDMECLRVANEITVN
Research Area	Signal Transduction
Source	E.coli
Gene Names	Lum
Expression Region	19-338aa
Notes	Repeated freezing and thawing is not recommended. Store working aliquots at 4°C for up to one week.
Tag Info	N-terminal 6xHis-tagged
Mol. Weight	40.5kDa
Protein Description	Full Length of Mature Protein

Image



(Tris-Glycine gel) Discontinuous SDS-PAGE (reduced) with 5% enrichment gel and 15% separation gel.