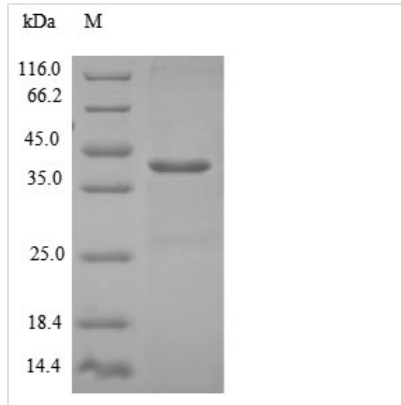


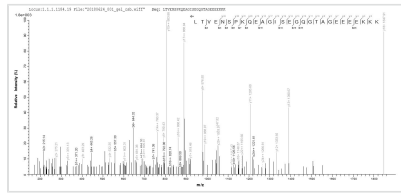


Recombinant Human Density-regulated protein(DENR)

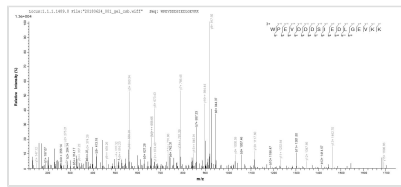
Product Code	CSB-EP006724HU
Relevance	May be involved in the translation of target mRNAs by scanning and recognition of the initiation codon. Involved in translation initiation; promotes recruitment of aminoacylated initiator tRNA to P site of 40S ribosomes. Can promote release of deacylated tRNA and mRNA from recycled 40S subunits following ABCE1-mediated dissociation of post-termination ribosomal complexes into subunits. Plays a role in the modulation of the translational profile of a subset of cancer-related mRNAs when recruited to the translational initiation complex by the oncogene MCTS1.
Storage	The shelf life is related to many factors, storage state, buffer ingredients, storage temperature and the stability of the protein itself. Generally, the shelf life of liquid form is 6 months at -20°C/-80°C. The shelf life of lyophilized form is 12 months at -20°C/-80°C.
Uniprot No.	O43583
Storage Buffer	Tris-based buffer,50% glycerol
Alias	Protein DRP1Smooth muscle cell-associated protein 3 ;SMAP-3
Product Type	Recombinant Protein
Species	Homo sapiens (Human)
Purity	Greater than 90% as determined by SDS-PAGE.
Sequence	AADISESSGADCKGDPRNSAKLDADYPLRVLYCGVCSLPTEYCEYMPDVAKC RQWLEKNFPNEFAKLTVENSPKQEAGISEGQGTAGEEEEEKKKQKRGGRGQIK QKKKTVPQKVTIKIPRAKKKYVTRVCGLATFEIDLKEAQRFFAQKFSCGASVT GEDEIIIQGDFTDDIIDVIQEKWPEVDDDSIEDLGEVKK
Research Area	Epigenetics and Nuclear Signaling
Source	E.coli
Gene Names	DENR
Expression Region	2-198aa
Notes	Repeated freezing and thawing is not recommended. Store working aliquots at 4°C for up to one week.
Tag Info	N-terminal 6xHis-SUMO-tagged
Mol. Weight	38.0kDa
Protein Description	Full Length of Mature Protein
Image	



(Tris-Glycine gel) Discontinuous SDS-PAGE (reduced) with 5% enrichment gel and 15% separation gel.



Based on the SEQUEST from database of E.coli host and target protein, the LC-MS/MS Analysis result of CSB-EP006724HU could indicate that this peptide derived from E.coli-expressed Homo sapiens (Human) DENR.



Based on the SEQUEST from database of E.coli host and target protein, the LC-MS/MS Analysis result of CSB-EP006724HU could indicate that this peptide derived from E.coli-expressed Homo sapiens (Human) DENR.