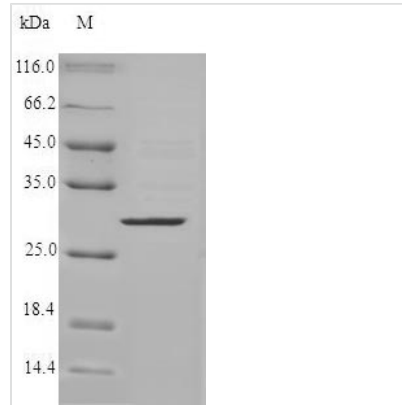




Recombinant Human Chymase(CMA1)

Product Code	CSB-EP005599HU
Relevance	Major secreted protease of mast cells with suspected roles in vasoactive peptide generation, Extracellular domain matrix degradation, and regulation of gland secretion.
Storage	The shelf life is related to many factors, storage state, buffer ingredients, storage temperature and the stability of the protein itself. Generally, the shelf life of liquid form is 6 months at -20°C/-80°C. The shelf life of lyophilized form is 12 months at -20°C/-80°C.
Uniprot No.	P23946
Storage Buffer	Tris-based buffer,50% glycerol
Alias	Alpha-chymase Mast cell protease I
Product Type	Recombinant Protein
Species	Homo sapiens (Human)
Purity	Greater than 90% as determined by SDS-PAGE.
Sequence	IIGGTECKPHSRPYMAYLEIVTSNGPSKFCGGFLIRRNFVLTAAHCAGRSITVTL GAHNITEEEDTWQKLEVIKQFRHPKYNTSTLHHDIMLLKLKEKASLTAVGTLPLF PSQFNFVPPGRMCRVAGWGRTGVLPKPGSDTLQEVKLRLMDPQACSHFRDFD HNLQLCVGNPRKTKSAFKGDSGGPLLCAQVAQGVISYGRSDAKPPAVFTRISH YRPWINQILQAN
Research Area	Cardiovascular
Source	E.coli
Gene Names	CMA1
Expression Region	22-247aa
Notes	Repeated freezing and thawing is not recommended. Store working aliquots at 4°C for up to one week.
Tag Info	N-terminal 6xHis-tagged
Mol. Weight	29.0kDa
Protein Description	Full Length of Mature Protein
Image	



(Tris-Glycine gel) Discontinuous SDS-PAGE (reduced) with 5% enrichment gel and 15% separation gel.