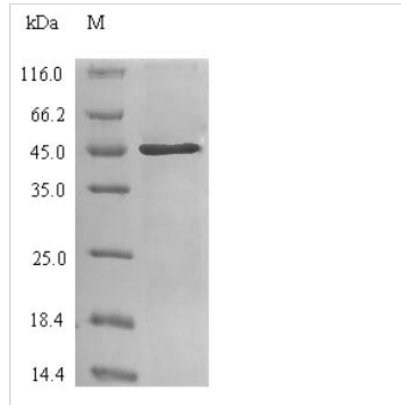




Recombinant Human Carbonic anhydrase 2(CA2)

| | |
|----------------------------|---|
| Product Code | CSB-EP004370HU |
| Relevance | Essential for bone resorption and osteoclast differentiation . Reversible hydration of carbon dioxide. Can hydrate cyanamide to urea. Involved in the regulation of fluid secretion into the anterior chamber of the eye. Contributes to intracellular pH regulation in the duodenal upper villous epithelium during proton-coupled peptide absorption. Stimulates the chloride-bicarbonate exchange activity of SLC26A6.3 Publications |
| Storage | The shelf life is related to many factors, storage state, buffer ingredients, storage temperature and the stability of the protein itself. Generally, the shelf life of liquid form is 6 months at -20°C/-80°C. The shelf life of lyophilized form is 12 months at -20°C/-80°C. |
| Uniprot No. | P00918 |
| Storage Buffer | Tris-based buffer,50% glycerol |
| Alias | Carbonate dehydratase II;Carbonic anhydrase C ;CAC;Carbonic anhydrase II ;CA-II |
| Product Type | Recombinant Protein |
| Species | Homo sapiens (Human) |
| Purity | Greater than 90% as determined by SDS-PAGE. |
| Sequence | SHHWGYGKHNGPEHWHKDFPIAKGERQSPVDIDTHTAKYDPSLKPLSVSYDQ ATSLRILNNGHAFNVEFDDSDQKAVLKGGLDGTYRLIQFHFHWGSLDGQGS EHTVDKCKKYAAELHLVHWNTKYGDFGKAVQQPDGLAVLGLFLKVGSAKPGLQ KVVDVLDSIKTKGKSADFTNFAARGLLPESLDYWTYPGSLTTPPLLECVTWIVL KEPISVSSEQVLKFRKLNFNNGEGEPEELMVDNWRPAQPLKNRQIKASFK |
| Research Area | Signal Transduction |
| Source | E.coli |
| Gene Names | CA2 |
| Protein Names | Carbonate dehydratase II;Carbonic anhydrase C ;CAC;Carbonic anhydrase II ;CA-II |
| Expression Region | 2-260aa |
| Notes | Repeated freezing and thawing is not recommended. Store working aliquots at 4°C for up to one week. |
| Tag Info | N-terminal 6xHis-SUMO-tagged |
| Mol. Weight | 45.1 kDa |
| Protein Description | Full Length of Mature Protein |
| Image | |



(Tris-Glycine gel) Discontinuous SDS-PAGE (reduced) with 5% enrichment gel and 15% separation gel.