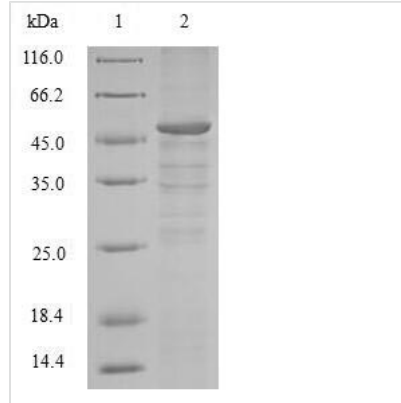




Recombinant Human G2/mitotic-specific cyclin-B1(CCNB1)

Product Code	CSB-BP004806HU
Relevance	Essential for the control of the cell cycle at the G2/M (mitosis) transition.
Storage	The shelf life is related to many factors, storage state, buffer ingredients, storage temperature and the stability of the protein itself. Generally, the shelf life of liquid form is 6 months at -20°C/-80°C. The shelf life of lyophilized form is 12 months at -20°C/-80°C.
Uniprot No.	P14635
Storage Buffer	Tris-based buffer,50% glycerol
Product Type	Recombinant Protein
Species	Homo sapiens (Human)
Purity	Greater than 90% as determined by SDS-PAGE.
Sequence	MALRVTRNSKINAENKAKINMAGAKRVPTAPAATSKPGLRPRTALGDIGNKVS EQLQAKMMPMKKEAKPSATGKVIDKLPKPLEKVPMLVPVPVSEPVPEPEPEPE PEPVKEEKLSPEPILVDTASPSMETSGCAPAEEDLCQAFSDVILAVNDVDAED GADPNLCSEYVKDIYAYLRQLEEEQAVRPKYLLGREVTGNMRAILIDWLQVQV MKFRLLQETMYMTVSIIDRFMQNNCVPKKMLQLVGVGTAMFIASKYEEMYPPEI GDFAFVTDNTYTKHQIRQMEMKILRALNFGLGRPLPLHFLRRASKIGEVDVEQ HTLAKYLMELTMLDYDMVHFPPSQIAAGAFCLALKILDNGEWTPTLQHLYSYTE ESLLPVMQHLAKNVVMVNQGLTKHMTVKNKYATSKHAKISTLPQLNSALVQDL AKAVAKV
Research Area	Cell Biology
Source	Baculovirus
Gene Names	CCNB1
Protein Names	Recommended name: G2/mitotic-specific cyclin-B1
Expression Region	1-433aa
Notes	Repeated freezing and thawing is not recommended. Store working aliquots at 4°C for up to one week.
Tag Info	N-terminal 10xHis-tagged and C-terminal Myc-tagged
Mol. Weight	52.3kDa
Protein Description	Full Length
Image	



(Tris-Glycine gel) Discontinuous SDS-PAGE (reduced) with 5% enrichment gel and 15% separation gel.