

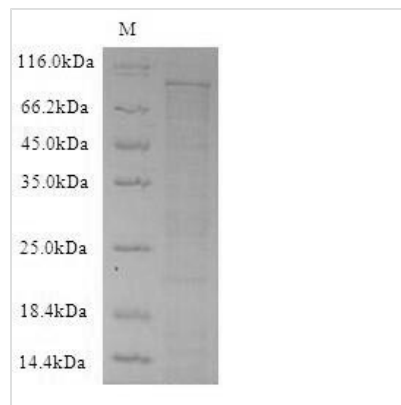


Recombinant Mouse Dipeptidyl peptidase 4(Dpp4),partial

Product Code	CSB-CF007139MO
Relevance	<p>Cell surface glycoprotein receptor involved in the costimulatory signal essential for T-cell receptor (TCR)-mediated T-cell activation. Acts as a positive regulator of T-cell coactivation, by binding at least ADA, CAV1, IGF2R, and PTPRC. Its binding to CAV1 and CARD11 induces T-cell proliferation and NF-kappa-B activation in a T-cell receptor/CD3-dependent manner. Its interaction with ADA also regulates lymphocyte-epithelial cell adhesion. In association with FAP is involved in the pericellular proteolysis of the extracellular matrix (ECM), the migration and invasion of endothelial cells into the ECM. May be involved in the promotion of lymphatic endothelial cells adhesion, migration and tube formation. When overexpressed, enhanced cell proliferation, a process inhibited by GPC3. Acts also as a serine exopeptidase with a dipeptidyl peptidase activity that regulates various physiological processes by cleaving peptides in the circulation, including many chemokines, mitogenic growth factors, neuropeptides and peptide hormones. Removes N-terminal dipeptides sequentially from polypeptides having unsubstituted N-termini provided that the penultimate residue is proline.</p>
Storage	<p>The shelf life is related to many factors, storage state, buffer ingredients, storage temperature and the stability of the protein itself. Generally, the shelf life of liquid form is 6 months at -20°C/-80°C. The shelf life of lyophilized form is 12 months at -20°C/-80°C.</p>
Uniprot No.	P28843
Storage Buffer	Tris-based buffer,50% glycerol
Product Type	Transmembrane Protein
Species	Mus musculus (Mouse)
Purity	Greater than 90% as determined by SDS-PAGE.
Sequence	SKDEAAADSRRTYSLADYLKSTFRVKSYSLWWVSDFEYLYKQENNILLNNAEH GNSSIFLENSTFESFGYHSVSPDRLFVLLLEYNYVKQWRHSYASYNIVDNKR QLITEEKIPNNTQWITWSPEGHKLAYVWKNDIYVKVEPHLPSHRITSTGEENVIV NGITDWVYEEEFVFGAYSALWWSPNNTFLAYAQFNDTGVPLEYSFYSDSLQY PKTVWIPYPKAGAVNPTVKFFIVNIDSLSSSSSAAPIQIPAPASVARGDHLYLCDV VWATEERISLQWLRRIQNYSVMAICDYDKINLTWNCPSQQHVEMSTTGWVG RFRPAEPHFTSDGSSFYKIIDKDGKGYKHICHFPKDKKDCFTITKGAWEVISIEAL TSDYLYYISNQYKEMPGGRNLYKIQLTDHTNVKCLSCDLNPERCQYYAVSFSK EAKYYQLGCWGPGLPLYTLHRSTDHKLRLVLEDNSALDRMLQDVQMPSKGLD FIVLNETRFWYQMILPPHFDKSKKYPLLLDVYAGPCSQKADASFRLNWTATYLA STENIIVASFDGRGSGYQGDKIMHAINRRRLGTLEVEDQIEAARQFVKMGFVDSK RVAIWGWSYGGYVTSMLVLSGSGVFKCGIAPVSRWEYYSVYTERYMGL PIPEDNLDHYRNSTVMSRAEHFKQVEYLLIHGTADDNVHFQQSAQISKALVDA GVDFQAMWYTDDEDHGIASSTAHQHIYSHMSHFLQQCFSLH



Research Area	Immunology
Source	in vitro E.coli expression system
Gene Names	Dpp4
Protein Names	Dipeptidyl peptidase IV Short name: DPP IV T-cell activation antigen CD26 Thymocyte-activating molecule Short name: THAM CD_antigen: CD26 Cleaved into the following 2 chains: Dipeptidyl peptidase 4 membrane form Alternative name(s): Dipeptidyl peptidase I
Expression Region	29-760aa
Notes	Repeated freezing and thawing is not recommended. Store working aliquots at 4°C for up to one week.
Tag Info	N-terminal 6xHis-SUMO-tagged
Mol. Weight	100.5kDa
Protein Description	Extracellular Domain

Image


(Tris-Glycine gel) Discontinuous SDS-PAGE (reduced) with 5% enrichment gel and 15% separation gel.