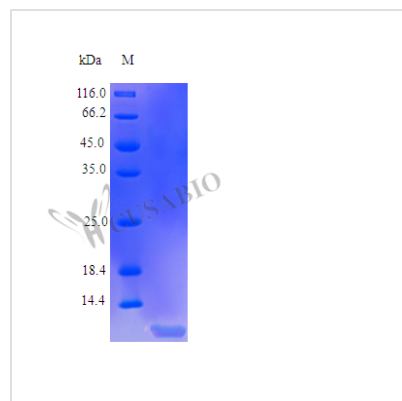




# Recombinant Human Insulin-like growth factor II protein(IGF2) (Active)

<b>Product Code</b>	CSB-AP002551HU
<b>Uniprot No.</b>	P01344
<b>Storage Buffer</b>	0.2 μm filtered 20 mM Tris-HCl, pH 8.0, 150 mM NaCl, with 0.02 % Tween-20 ,lyophilized
<b>Product Type</b>	Growth Factor
<b>Species</b>	Homo sapiens (Human)
<b>Biological Activity</b>	Fully biologically active when compared to standard. The ED50 as determined by a cell proliferation assay using serum free human MCF-7 cells is less than 2 ng/ml, corresponding to a specific activity of >5.0x10 <sup>5</sup> IU/mg.
<b>Purity</b>	>98% as determined by SDS-PAGE and HPLC.
<b>Sequence</b>	AYRPSETLCG GELVDTLQFV CGDRGFYFSR PASRVSRRSR GIVEECCFRS CDLALLETYC ATPAKSE
<b>Lead Time</b>	5-10 business days
<b>Research Area</b>	Cancer
<b>Source</b>	E.coli
<b>Gene Names</b>	IGF2
<b>Expression Region</b>	25-91aa
<b>Tag Info</b>	Tag-Free
<b>Mol. Weight</b>	7.5 kDa
<b>Protein Description</b>	Partial
<b>PubMed ID</b>	6382022; 6382021; 2450353; 3002851; 3476948; 3683205; 3881277; 7730145; 16531418; 20842449; 15498874; 14702039; 16554811; 15489334; 3167054; 3653397; 3652904; 658418; 2722836; 7633596; 11448941; 12586351; 15359740; 1569071; 16912056; 19066168; 19838169; 2

## Image





---

**Typical**

Less than 1.0 EU/ $\mu$ g as determined by LAL method.