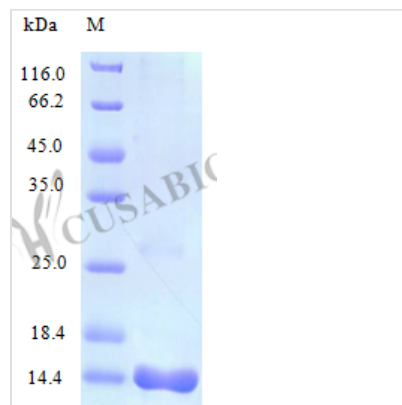




Recombinant Human C-C motif chemokine 25 protein(CCL25) (Active)

Product Code	CSB-AP000981HU
Uniprot No.	O15444
Storage Buffer	0.2 μm filtered PBS, pH 7.4 ,lyophilized
Product Type	Chemokine
Species	Homo sapiens (Human)
Biological Activity	Fully biologically active when compared to standard. The biological activity determined by a chemotaxis bioassay using human monocytes is in a concentration range of 1.0-10 ng/ml.
Purity	>97% as determined by SDS-PAGE and HPLC.
Sequence	M+QGVFEDCCL AYHYPIGWAV LRRAWTYRIQ EVSGSCNLPA AIFYLPKRHR KVCGNPKSRE VQRAMKLLDA RNKVFALHHT NTQTFQAGPH AVKKLSSGNS KLSSSKFSNP ISSSKRNVSL LISANSGL
Lead Time	5-10 business days
Research Area	Immunology
Source	E.coli
Gene Names	CCL25
Expression Region	24-150aa
Tag Info	Tag-Free
Mol. Weight	14.3 kDa
Protein Description	Full Length of Mature Protein
PubMed ID	9285413; 14702039; 15057824; 15489334; 10229797; 23341447

Image



Typical

Less than 1.0 EU/μg as determined by LAL method.