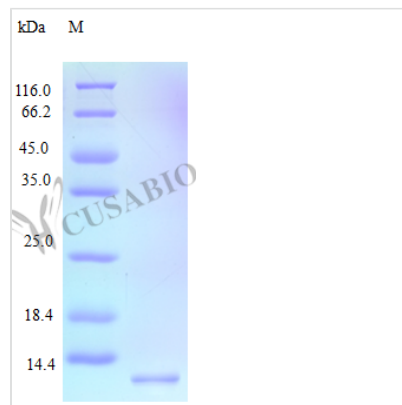




Recombinant Human C-C motif chemokine 15 protein(CCL15) (Active)

Product Code	CSB-AP000591HU
Uniprot No.	Q16663
Storage Buffer	0.2 μm filtered PBS, pH 7.4 ,lyophilized
Product Type	Chemokine
Species	Homo sapiens (Human)
Biological Activity	Fully biologically active when compared to standard. The biological activity determined by a chemotaxis bioassay using human T-lymphocytes is in a concentration range of 1.0-10 ng/ml.
Purity	>97% as determined by SDS-PAGE and HPLC.
Sequence	QFINDAETEL MMSKLPLENP VVLNSFHFAA DCCTSYISQS IPCSLMKSYF ETSSECSKPG VIFLTKKGRQ VCAKPSGPGV QDCMKKLPY SI
Lead Time	5-10 business days
Research Area	Immunology
Source	E.coli
Gene Names	CCL15
Expression Region	22-113aa
Tag Info	Tag-Free
Mol. Weight	10.2 kDa
Protein Description	Full Length of Mature Protein
PubMed ID	9548457; 9624581; 9600961; 10213461; 15489334; 15340161; 9129202; 9558365; 15905581; 10320325

Image



Typical

Less than 1.0 EU/μg as determined by LAL method.