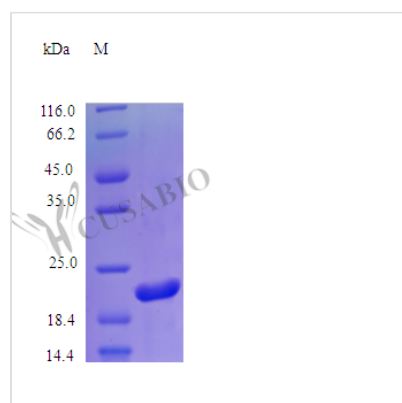




# Recombinant Human Somatotropin protein(GH1) (Active)

<b>Product Code</b>	CSB-AP000011HU
<b>Uniprot No.</b>	P01241
<b>Storage Buffer</b>	0.2 μm filtered PBS, pH 7.4 ,lyophilized
<b>Product Type</b>	Hormone
<b>Species</b>	Homo sapiens (Human)
<b>Biological Activity</b>	Fully biologically active when compared to standard. The ED50 as determined by a cell proliferation assay using rat Nb2-11 lymphoma cells is less than 0.1 ng/ml, corresponding to a specific activity of $>1.0 \times 10^7$ IU/mg.
<b>Purity</b>	>98% as determined by SDS-PAGE and HPLC.
<b>Sequence</b>	FPTIPLSRLF DNAMLRAHRL HQLAFDITYQE FEEAYIPKEQ KYSFLQNPQT SLCFSESIPT PSNREETQQK SNLELLRISL LLIQSWLEPV QFLRSVFANS LVYGASDSNV YDLLKDLEEG IQTLMGRLED GSPRTGQIFK QTYSKFDTNS HNDDALLKNY GLLYCFRKDM DKVETFLRIV QCRSVEGSCG F
<b>Lead Time</b>	5-10 business days
<b>Research Area</b>	Signal Transduction
<b>Source</b>	E.coli
<b>Gene Names</b>	GH1
<b>Expression Region</b>	27-127aa
<b>Tag Info</b>	Tag-Free
<b>Mol. Weight</b>	22.0 kDa
<b>Protein Description</b>	Full Length of Mature Protein
<b>PubMed ID</b>	386281; 377496; 6269091; 7169009; 2744760; 18473352; 16625196; 10931946; 15489334; 3912261; 5810834; 5144027; 4675454; 5279046; 5279528; 7462247; 7356479; 7028740; 8364549; 14997482; 10393484; 16807684; 3447173; 1549776; 7984244; 8943276; 8552145; 9152628

## Image





---

**Typical**

Less than 1.0 EU/ $\mu$ g as determined by LAL method.