



## MONOCLONAL ANTIBODY

**Catalog No. YCU-MK-AP01**

# Anti APP ( $\beta$ -amyloid precursor protein)

|                        |  |
|------------------------|--|
| <b>Product type</b>    | Primary antibodies   |
| <b>Host</b>            | Mouse  |
| <b>Source</b>          |  |
| <b>Form</b>            | Liquid<br>PBS (pH7.2) with 0.02% NaN <sub>3</sub> as a preservative.                         |
| <b>Volume</b>          | 100 $\mu$ l  |
| <b>(Concentration)</b> | (1.0 mg/ml)  |
| <b>Specificity</b>     | Recognizes a sAPP sequence between residues 580 and 671. It also detects membrane-bound APP. |
| <b>Antigen</b>         | Human soluble $\beta$ -amyloid precursor protein (sAPP)                                      |
| <b>Clone</b>           | 278  |
| <b>Isotype</b>         |  |

**Application notes** WB (Not tested in other applications.)

### Recommended use

### Recommended dilutions

Western blotting, 1/1000 to 1/2000 depending on detection method.

Predicted molecular weight: 105 kDa for sAPP and 115 kDa for Membrane-bound mature APP.

Optimal dilutions/concentrations should be determined by the end user.

### Staining Pattern

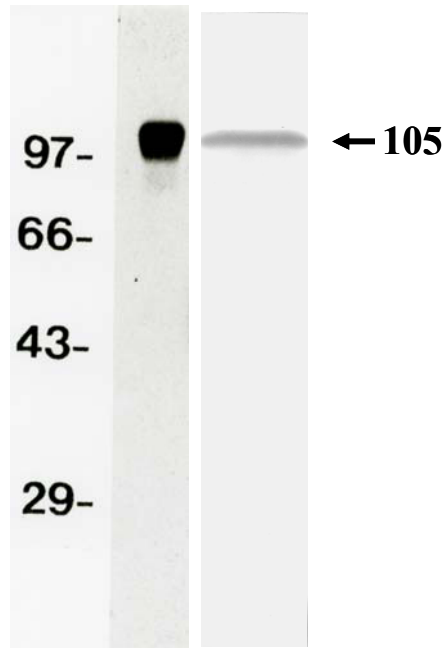
**Cross reactivity** Reacts with human antigen. Not tested for other species.

**Storage** Store below -20°C (below -70°C for prolonged storage).

Aliquot to avoid cycles of freeze/thaw.

### References

- 1) Higashi, S. and Miyazaki, K.: Novel processing of  $\beta$ -amyloid precursor protein catalyzed by membrane type 1 matrix metalloproteinase releases a fragment lacking the inhibitor domain against gelatinase A. *Biochemistry*, 42: 6514-6526, 2003.
- 2) Higashi, S., Miyazaki, K.: Identification of a region of beta-amyloid precursor protein essential for its gelatinase A inhibitory activity. *J Biol Chem*. 278(16): 14020-14028, 2003
- 3) Miyata, S., Koshikawa, N., Higashi, S., Miyagi, Y., Nagashima, Y., Yanoma, S., Kato, Y., Yasumitsu H., Miyazaki, K.: Expression of trypsin in human cancer cell lines and cancer tissues and its tight binding to soluble form of Alzheimer amyloid precursor protein in culture. *J Biochem*. 125(6): 1067-1076, 1999
- 4) Koshikawa, N., Nakamura, T., Tsuchiya, N., Isaji, M., Yasumitsu, H., Umeda, M., Miyazaki, K.: Purification and identification of a novel and four known serine proteinase inhibitors secreted by human glioblastoma cells. *J Biochem*. 119(2): 334-339, 1996



Western Blot Analysis for purified APP (soluble) and supernatant of Human Fibrosarcoma Cell Line HT1080 (left).

*For research use only. Not for clinical diagnosis.*



COSMO BIO Co., LTD.

【JAPAN】  
TOYO EKIMAE BLDG. 2-20, TOYO 2-CHOME,  
KOTO-KU. TOKYO 135-0016, JAPAN  
Phone: +81-3-5632-9610  
FAX: +81-3-5632-9619  
URL: <https://www.cosmobio.co.jp/>



COSMO BIO USA

【Outside Japan】  
2792 Loker Ave West, Suite 101  
Carlsbad, CA 92010, USA  
email: [info@cosmobioussa.com](mailto:info@cosmobioussa.com)  
Phone/FAX: (+1) 760-431-4600  
URL: [www.cosmobioussa.com](http://www.cosmobioussa.com)