

Anti-CD45RB Antibody

Catalog #	Source	Reactivity	Applications
CPA8532	Mouse	H	IF, FC
Description	Mouse monoclonal antibody to CD45RB		
Purification	The antibody was purified by affinity chromatography.		
Specificity	Recognises human CD45RB.		
Clonality	Monoclonal		
Conjugation			
Form	IgG1. Liquid in PBS, pH 7.3, and 0.02% sodium azide.		
Gene Symbol	PTPRC		
Alternative Names	CD45; Receptor-type tyrosine-protein phosphatase C; Leukocyte common antigen; L-CA; T200; CD antigen CD45		
Entrez Gene	5788 (Human)		
SwissProt	P08575 (Human)		
Storage/Stability	Shipped and store at 4°C for one year. Do not freeze.		
Directions for Use	<ol style="list-style-type: none"> 1. Take 100 ul peripheral blood anticoagulated by EDTA and add to the bottom of 5 ml tube. 2. Add appropriate amount of antibody to the bottom of flow tube mixing with the whole blood; incubate for 30 minutes at room temperature. 3. Add 2 ml RBC lysis buffer; incubate for 10 minutes after mixing; dissolve red blood cells. 4. Sample tube is set to 1000 rpm centrifugation for 5 minutes; discard the supernatant. 5. Add 2 ml PBS wash buffer to resuspend the cells; then 1000 rpm centrifugation 		

Application key: E- ELISA, WB- Western blot, IH- Immunohistochemistry, IF- Immunofluorescence, FC- Flow cytometry, IC- Immunocytochemistry, IP- Immunoprecipitation, CHIP- Chromatin Immunoprecipitation, EMSA- Electrophoretic Mobility Shift Assay, BL- Blocking, SE- Sandwich ELISA, CBE- Cell-based ELISA, RNAi- RNA interference

Species reactivity key: H- Human, M- Mouse, R- Rat, B- Bovine, C- Chicken, D- Dog, G- Goat, Mk- Monkey, P- Pig, Rb- Rabbit, S- Sheep, Z- Zebrafish

COHESION BIOSCIENCES LIMITED

WEB
www.cohesionbio.com

ORDER
order@cohesionbio.com

SUPPORT
techsupport@cohesionbio.com

CUSTOM
custom@cohesionbio.com

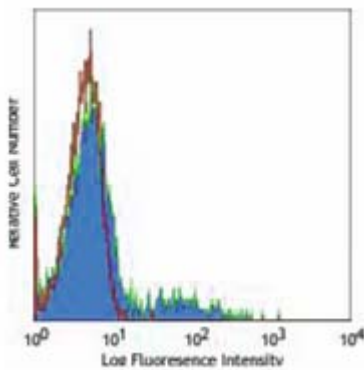
Product Data Sheet

for 5 minutes; discard the supernatant.

6. Add appropriate amount of fluorescent-labeled anti-mouse IgGs and incubate for 20 minutes away from light at room temperature.

7. Add 2 ml PBS wash buffer to resuspend the cells; then 1000 rpm centrifugation for 5 minutes; discard the supernatant.

8. Add 0.5 ml PBS wash buffer to resuspend the cells and detect by flow cytometry (sample should be determined on the day on the machine and can also be added fixation overnight at 4 °C then measured).



Flow cytometric analysis of human peripheral blood lymphocytes using Anti-CD45RB Antibody, followed by anti-mouse IgG PE.

Application key: E- ELISA, WB- Western blot, IH- Immunohistochemistry, IF- Immunofluorescence, FC- Flow cytometry, IC- Immunocytochemistry, IP- Immunoprecipitation, CHIP- Chromatin Immunoprecipitation, EMSA- Electrophoretic Mobility Shift Assay, BL- Blocking, SE- Sandwich ELISA, CBE- Cell-based ELISA, RNAi- RNA interference

Species reactivity key: H- Human, M- Mouse, R- Rat, B- Bovine, C- Chicken, D- Dog, G- Goat, Mk- Monkey, P- Pig, Rb- Rabbit, S- Sheep, Z- Zebrafish

COHESION BIOSCIENCES LIMITED

WEBwww.cohesionbio.com**ORDER**order@cohesionbio.com**SUPPORT**techsupport@cohesionbio.com**CUSTOM**custom@cohesionbio.com