

Anti-CD33 Antibody

Catalog #	Source	Reactivity	Applications
CPA8518	Mouse	H	IF, FC

Description	Mouse monoclonal antibody to CD33
Purification	The antibody was purified by affinity chromatography.
Specificity	Recognises human CD33.
Clonality	Monoclonal
Conjugation	
Form	IgG1. Liquid in PBS, pH 7.3, and 0.02% sodium azide.
Gene Symbol	CD33
Alternative Names	SIGLEC3; Myeloid cell surface antigen CD33; Sialic acid-binding Ig-like lectin 3; Siglec-3; gp67; CD antigen CD33
Entrez Gene	945 (Human)
SwissProt	P20138 (Human)
Storage/Stability	Shipped and store at 4°C for one year. Do not freeze.
Directions for Use	<ol style="list-style-type: none">1. Take 100 ul peripheral blood anticoagulated by EDTA and add to the bottom of 5 ml tube.2. Add appropriate amount of antibody to the bottom of flow tube mixing with the whole blood; incubate for 30 minutes at room temperature.3. Add 2 ml RBC lysis buffer; incubate for 10 minutes after mixing; dissolve red blood cells.4. Sample tube is set to 1000 rpm centrifugation for 5 minutes; discard the supernatant.5. Add 2 ml PBS wash buffer to resuspend the cells; then 1000 rpm centrifugation

Application key: E- ELISA, WB- Western blot, IH- Immunohistochemistry, IF- Immunofluorescence, FC- Flow cytometry, IC- Immunocytochemistry, IP- Immunoprecipitation, CHIP- Chromatin Immunoprecipitation, EMSA- Electrophoretic Mobility Shift Assay, BL- Blocking, SE- Sandwich ELISA, CBE- Cell-based ELISA, RNAi- RNA interference

Species reactivity key: H- Human, M- Mouse, R- Rat, B- Bovine, C- Chicken, D- Dog, G- Goat, Mk- Monkey, P- Pig, Rb- Rabbit, S- Sheep, Z- Zebrafish

COHESION BIOSCIENCES LIMITED

WEB
www.cohesionbio.com

ORDER
order@cohesionbio.com

SUPPORT
techsupport@cohesionbio.com

CUSTOM
custom@cohesionbio.com

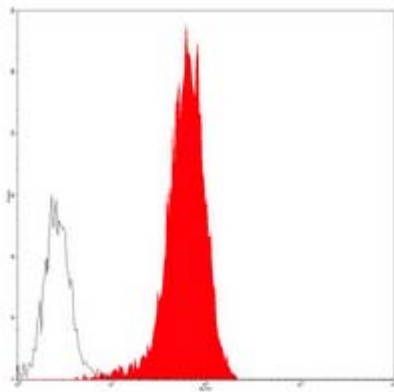
Product Data Sheet

for 5 minutes; discard the supernatant.

6. Add appropriate amount of fluorescent-labeled anti-mouse IgGs and incubate for 20 minutes away from light at room temperature.

7. Add 2 ml PBS wash buffer to resuspend the cells; then 1000 rpm centrifugation for 5 minutes; discard the supernatant.

8. Add 0.5 ml PBS wash buffer to resuspend the cells and detect by flow cytometry (sample should be determined on the day on the machine and can also be added fixation overnight at 4 °C then measured).



Flow cytometric analysis of HEL cells using Anti-CD33 Antibody, followed by anti-mouse IgG PE.

Application key: E- ELISA, WB- Western blot, IH- Immunohistochemistry, IF- Immunofluorescence, FC- Flow cytometry, IC- Immunocytochemistry, IP- Immunoprecipitation, CHIP- Chromatin Immunoprecipitation, EMSA- Electrophoretic Mobility Shift Assay, BL- Blocking, SE- Sandwich ELISA, CBE- Cell-based ELISA, RNAi- RNA interference

Species reactivity key: H- Human, M- Mouse, R- Rat, B- Bovine, C- Chicken, D- Dog, G- Goat, Mk- Monkey, P- Pig, Rb- Rabbit, S- Sheep, Z- Zebrafish

COHESION BIOSCIENCES LIMITED

WEB

www.cohesionbio.com

ORDER

order@cohesionbio.com

SUPPORT

techsupport@cohesionbio.com

CUSTOM

custom@cohesionbio.com