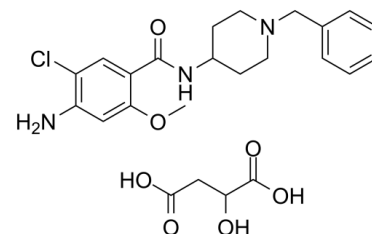


Data Sheet

| | |
|---------------------------|---|
| Product Name: | Clebopride (malate) |
| Cat. No.: | CS-5311 |
| CAS No.: | 57645-91-7 |
| Molecular Formula: | C ₂₄ H ₃₀ ClN ₃ O ₇ |
| Molecular Weight: | 507.96 |
| Target: | Dopamine Receptor |
| Pathway: | GPCR/G Protein; Neuronal Signaling |
| Solubility: | DMSO : ≥ 34 mg/mL (66.93 mM) |



BIOLOGICAL ACTIVITY:

Clebopride malate is a dopamine antagonist drug with antiemetic and prokinetic properties used to treat functional gastrointestinal disorders. Target: dopamine Clebopride is a substituted benzamide, closely related to metoclopramide.

CAIndexNames:

Butanedioic acid, 2-hydroxy-, compd. with 4-amino-5-chloro-2-methoxy-N-[1-(phenylmethyl)-4-piperidinyl]benzamide (1:1)

SMILES:

O=C(O)C(O)CC(O)=O.O=C(NC1CCN(CC2=CC=CC=C2)CC1)C3=CC(Cl)=C(N)C=C3OC

Caution: Product has not been fully validated for medical applications. For research use only.

Tel: 732-484-9848 Fax: 888-484-5008 E-mail: sales@ChemScene.com

Address: 1 Deer Park Dr, Suite Q, Monmouth Junction, NJ 08852, USA