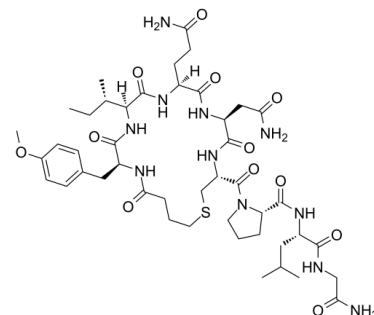


## Data Sheet

<b>Product Name:</b>	Carbetocin
<b>Cat. No.:</b>	CS-3117
<b>CAS No.:</b>	37025-55-1
<b>Molecular Formula:</b>	C <sub>45</sub> H <sub>69</sub> N <sub>11</sub> O <sub>12</sub> S
<b>Molecular Weight:</b>	988.16
<b>Target:</b>	Oxytocin Receptor
<b>Pathway:</b>	GPCR/G Protein
<b>Solubility:</b>	DMSO : ≥ 31 mg/mL (31.37 mM)



### BIOLOGICAL ACTIVITY:

Carbetocin (Lonactene; Duratocin) is an obstetric drug used to control postpartum hemorrhage and bleeding after giving birth; an agonist at peripheral oxytocin receptors.

### References:

[1]. Carbetocin, From Wikipedia

### CAIndexNames:

Glycinamide, N-(4-mercapto-1-oxobutyl)-O-methyl-L-tyrosyl-L-isoleucyl-L-glutamyl-L-asparagyl-L-cysteinyl-L-prolyl-L-leucyl-, cyclic (1→5)-thioether

### SMILES:

O=C([C@H](CSCCCC(N[C@H](C1=O)CC2=CC=C(OC)C=C2)=O)NC([C@H](NC([C@](N1)([H])[C@@H](C)C)=O)([H])CCC(N)=O)=O)CC(N)=O)N(CCC3)[C@@H]3C(N[C@@H](CC(C)C)C(NCC(N)=O)=O)=O

**Caution: Product has not been fully validated for medical applications. For research use only.**

Tel: 732-484-9848 Fax: 888-484-5008 E-mail: sales@ChemScene.com

Address: 1 Deer Park Dr, Suite Q, Monmouth Junction, NJ 08852, USA