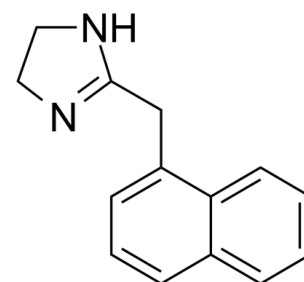


Data Sheet

Product Name:	Naphazoline (hydrochloride)
Cat. No.:	CS-2555
CAS No.:	550-99-2
Molecular Formula:	C ₁₄ H ₁₅ ClN ₂
Molecular Weight:	246.74
Target:	Adrenergic Receptor
Pathway:	GPCR/G Protein; Neuronal Signaling
Solubility:	DMSO : ≥ 25 mg/mL (101.32 mM); H ₂ O : 50 mg/mL (202.64 mM; Need ultrasonic)



HCl

BIOLOGICAL ACTIVITY:

Naphazoline hydrochloride is an ocular vasoconstrictor and imidazoline derivative sympathomimetic amine. Target: Adrenergic Receptor Naphazoline hydrochloride is the common name for 2-(1-naphthylmethyl)-2-imidazoline hydrochloride. It is a sympathomimetic agent with marked alpha adrenergic activity. It is a vasoconstrictor with a rapid action in reducing swelling when applied to mucous membrane. It acts on alpha-receptors in the arterioles of the conjunctiva to produce constriction, resulting in decreased congestion. It is an active ingredient in several over-the-counter formulations including Clear Eyes and Naphcon eye drops. From Wikipedia.

References:

[1]. <http://en.wikipedia.org/wiki/Naphazoline>

CAIndexNames:

1H-Imidazole, 4,5-dihydro-2-(1-naphthalenylmethyl)-, hydrochloride (1:1)

SMILES:

C1(CC2=NCCN2)=CC=CC3=CC=CC=C13.Cl

Caution: Product has not been fully validated for medical applications. For research use only.

Tel: 732-484-9848 Fax: 888-484-5008 E-mail: sales@ChemScene.com

Address: 1 Deer Park Dr, Suite Q, Monmouth Junction, NJ 08852, USA