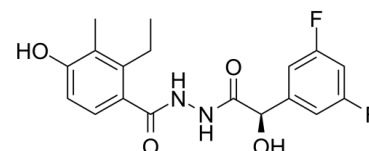


## Data Sheet

<b>Product Name:</b>	EMD638683 (R-Form)
<b>Cat. No.:</b>	CS-0659
<b>CAS No.:</b>	1184940-47-3
<b>Molecular Formula:</b>	C <sub>18</sub> H <sub>18</sub> F <sub>2</sub> N <sub>2</sub> O <sub>4</sub>
<b>Molecular Weight:</b>	364.34
<b>Target:</b>	SGK
<b>Pathway:</b>	Metabolic Enzyme/Protease
<b>Solubility:</b>	DMSO : 180 mg/mL (494.04 mM; Need ultrasonic and warming)



### BIOLOGICAL ACTIVITY:

EMD638683 R-Form is the R-form of EMD638683. EMD638683 is a highly selective **SGK1** inhibitor with **IC<sub>50</sub>** of 3 μM. IC<sub>50</sub> & Target: SGK1<sup>[1]</sup>

### PROTOCOL (Extracted from published papers and Only for reference)

**Kinase Assay: Cell Assay: Animal Administration:**

### References:

[1]. Ackermann TF, et al. EMD638683, a novel SGK inhibitor with antihypertensive potency. *Cell Physiol Biochem*. 2011;28(1):137-46.

### CAIndexNames:

Benzeneacetic acid, 3,5-difluoro- $\alpha$ -hydroxy-, 2-(2-ethyl-4-hydroxy-3-methylbenzoyl)hydrazide, ( $\alpha$ R)-

### SMILES:

CC1=C(CC)C(C(NNC([C@H](O)C2=CC(F)=CC(F)=C2)=O)=O)=CC=C1O

**Caution: Product has not been fully validated for medical applications. For research use only.**

Tel: 732-484-9848 Fax: 888-484-5008 E-mail: sales@ChemScene.com

Address: 1 Deer Park Dr, Suite Q, Monmouth Junction, NJ 08852, USA