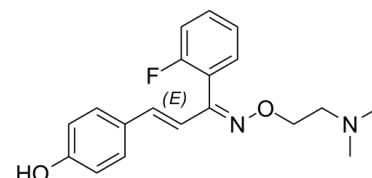


Data Sheet

Product Name:	Eplivanserin (mixture)
Cat. No.:	CS-0093050
CAS No.:	130581-13-4
Molecular Formula:	C ₁₉ H ₂₁ FN ₂ O ₂
Molecular Weight:	328.38
Target:	5-HT Receptor; Serotonin Transporter
Pathway:	GPCR/G Protein; Neuronal Signaling
Solubility:	DMSO : 125 mg/mL (380.66 mM; Need ultrasonic)



BIOLOGICAL ACTIVITY:

Eplivanserin mixture is a selective **serotonin reuptake** inhibitor and a **5-HT_{2A} receptor** antagonist, extracted from patent WO 2005/002578 A1^[1]. IC₅₀ & Target: 5-HT_{2A} receptor^[1].

References:

[1]. BERMAN, Robert, Mark, et al. COMPOSITIONS CONTAINING A SEROTONIN SELECTIVE REUPTAKE INHIBITOR AND A 5-HT_{2A} RECEPTOR ANTAGONIST. WO 2005/002578 A1.

CAIndexNames:

2-Propen-1-one, 1-(2-fluorophenyl)-3-(4-hydroxyphenyl)-, O-[2-(dimethylamino)ethyl]oxime, (2E)-

SMILES:

OC1=CC=C(C/C=C/C(C2=CC=CC=C2F)=N/OCCN(C)C)C=C1.[E]

Caution: Product has not been fully validated for medical applications. For research use only.

Tel: 732-484-9848 Fax: 888-484-5008 E-mail: sales@ChemScene.com

Address: 1 Deer Park Dr, Suite Q, Monmouth Junction, NJ 08852, USA