

APAF1

Synthetic Human Apoptotic Peptidase Activating Factor 1 (aa 1158-1177)(CT) Blocking Peptide

Catalog No. PX042BP **Quantity:** 50 µg
Alternate Names: CED4, apoptotic protease activating factor 1
Description: Amino acids 1158 to 1177 of human Apaf-1.

This gene encodes a cytoplasmic protein that initiates apoptosis. This protein contains several copies of the WD-40 domain, a caspase recruitment domain (CARD), and an ATPase domain (NB-ARC). Upon binding cytochrome c and dATP, this protein forms an oligomeric apoptosome. The apoptosome binds and cleaves caspase 9 preproprotein, releasing its mature, activated form. Activated caspase 9 stimulates the subsequent caspase cascade that commits the cell to apoptosis. Alternative splicing results in several transcript variants encoding different isoforms.

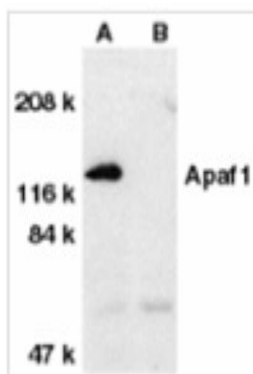
Gene ID: 317

Application: The peptide is used for blocking the activity of anti-Apaf-1. Incubating the peptide with equal volume of antibody for 30 min at 37°C usually completely blocks the antibody activity in Western blotting.

Formulation: It is supplied as 200 µg/ml, 50 µg/vial, in PBS pH7.2 (10 mM NaH₂PO₄, 10 mM, Na₂HPO₄, 130 mM NaCl) containing 0.1% bovine serum albumin and 0.02% sodium azide.. **Precaution:** Sodium azide is a poisonous and hazardous substance which should be handled by trained staff only.

Storage & Stability: Store at -20°C, stable for one year.

Apaf1 (C-Terminus) Peptide



NOT FOR HUMAN USE. FOR RESEARCH ONLY. NOT FOR DIAGNOSTIC OR THERAPEUTIC USE.

