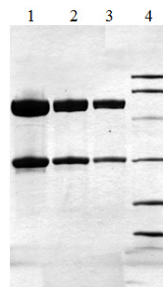


IGHG2

Native Human IgG2, Myeloma Plasma

Catalog No.	CSI19843A CSI19843B	Quantity:	5 mg 10 mg
Description:	IgG2 is the only IgG subclass which passes through the placenta at a level generally lower than that found in the mother. A deficiency of IgG2 indicates a poor antibody response to bacterial polysaccharides and can lead to increased susceptibility to infections caused by encapsulated bacteria.		
UniProt ID:	P01859		
Gene ID:	3501		
Source:	Human myeloma plasma		
Concentration:	≥ 1.0 mg/ml, lot specific		
Volume:	Lot specific		
Extinction Coefficient:	$E^{0.1\%}_{280\text{nm}} = 1.36$		
Formulation:	0.02M Sodium Phosphate, 0.15M NaCl, 0.05% Azide, pH 7.4		
Purity:	>95% by SDS-PAGE analysis		
Purification:	Affinity chromatography		
Storage & Stability:	Store at -80°C for up to 1 year. Upon initial thaw, prepare working aliquots and store at -80°C. Avoid repeated freeze-thaw cycles.		
Certification:	Prepared from plasma shown to be non reactive for HbsAG, anti-HCV, anti-HBc, and negative for anti-HIV 1 & 2 by FDA approved tests		



1. Human Myeloma IgG2 (20 ug) R
2. Human Myeloma IgG2 (10 ug) R
3. Human Myeloma IgG2 (5 ug) R
4. Molecular Weight Markers

NOT FOR HUMAN USE. FOR RESEARCH ONLY. NOT FOR DIAGNOSTIC OR THERAPEUTIC USE.



Cell Sciences®
65 Parker Street
Unit 11
Newburyport, MA 01950

Toll Free: 888-769-1246
Phone: 978-572-1070
Fax: 978-992-0298

E-mail: info@cellsciences.com
Website: www.cellsciences.com