

IGHG1

Native Human IgG1 from Myeloma Plasma

Catalog No.	CSI19842A	Quantity:	5.0 mg
	CSI19842B		10 mg

Description: In normal adult serum, the approximate percentage composition of Immunoglobulin isotype G (IgG) with respect to its subclasses is IgG1: 65%, IgG2: 23%, IgG3: 6%, and IgG4: 6%. Abnormal levels of one or more subclasses may be associated with autoimmune, anaphylactic and gut diseases, and recurrent infection or myeloma.

Gene ID: 3500

UniProt ID: P01857

Molecular Weight: 146 kDa

Source: Human myeloma plasma

Extinction Coefficient: 1.36

Concentration: ≥ 1.0 mg/ml, lot specific

Isotype: IgG1k

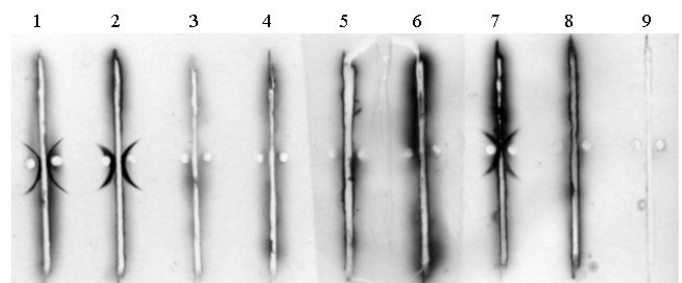
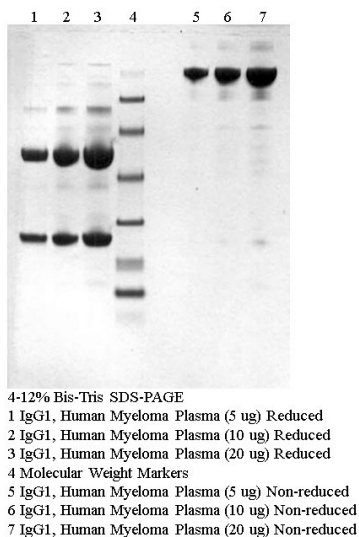
Formulation: 0.02M sodium phosphate, 0.15M sodium chloride, 0.05% sodium azide, pH 7.4

Purity: >95% by SDS-PAGE

Single arc by IEP with antisera to whole serum, human IgG, human kappa IgG1 by ELISA

Storage & Stability: Store at -80°C for up to 1 year. Upon initial thaw, prepare working aliquots and store at -80°C. **Avoid repeated freeze-thaw cycles.**

Certification: Prepared from myeloma plasma shown to be non-reactive for HbsAG, anti-HCV, anti-HBc, and negative for anti-HIV 1 & 2 by FDA approved tests.



Immunoelectrophoresis of IgG1, Human Myeloma Plasma

1 Anti Whole Human Serum (50 ul)	6 Anti Human IgD (35 ul)
2 Anti Human IgG (35 ul)	7 Anti Human Kappa (35 ul)
3 Anti Human IgA (35 ul)	8 Anti Human Lambda (35 ul)
4 Anti Human IgM (35 ul)	9 No Antiserum
5 Anti Human IgE (35 ul)	



Cell Sciences®
 65 Parker Street
 Unit 11
 Newburyport, MA 01950

Toll Free: 888-769-1246
 Phone: 978-572-1070
 Fax: 978-992-0298

E-mail: info@cellsciences.com
 Website: www.cellsciences.com

cellsciences.com

NOT FOR HUMAN USE. FOR RESEARCH ONLY. NOT FOR DIAGNOSTIC OR THERAPEUTIC USE.



Cell Sciences®
65 Parker Street
Unit 11
Newburyport, MA 01950

Toll Free: 888-769-1246
Phone: 978-572-1070
Fax: 978-992-0298

E-mail: info@cellsciences.com
Website: www.cellsciences.com