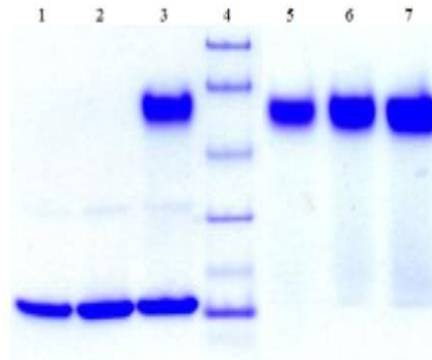


TTR

Native Human Prealbumin Plasma

Catalog No.	CSI19827A CSI19827B	Quantity:	1.0 mg 5 mg
Alternate Names:	Transthyretin, ATTR, TBPA		
Description:	Transthyretin, also called Prealbumin is a protein found in plasma at 30 mg per 100 ml. Functions in the transport of thyroxine, vitamin A, and retinol-binding protein. Probably transports thyroxine from the bloodstream to the brain. About 40% of plasma transthyretin circulates in a tight protein-protein complex with the plasma retinol-binding protein (RBP). The formation of the complex with RBP stabilizes the binding of retinol to RBP and decreases the glomerular filtration and renal catabolism of the relatively small RBP molecule. Clinically, prealbumin is a sensitive indicator of impaired liver function; low levels are found in viral hepatitis, cirrhosis, malnutrition, inflammation, and surgical trauma.		
UniProt ID:	P02766		
Gene ID:	7276		
Source:	Human plasma		
Molecular Weight:	55 kDa		
Formulation:	0.05M Sodium Phosphate, 0.15M NaCl, pH 7.5		
Purity:	>95% by SDS-PAGE analysis		
Concentration:	≥ 1.0 mg/ml, lot specific		
Storage & Stability:	Store at -80°C for up to 1 year. Upon initial thaw, prepare working aliquots and store at -80°C. Avoid repeated freeze-thaw cycles.		
Certification:	Prepared from plasma non reactive for HbsAG, anti-HCV, anti-HBc, and negative for anti-HIV 1 & 2 by FDA approved tests.		

SDS-PAGE of Native Human Prealbumin. Lane 1-3: 5,10,20 µg Reduced. Lane 4, MW Markers. Lane 5-7: 5,10,20 µg Non-reduced.



NOT FOR HUMAN USE. FOR RESEARCH ONLY. NOT FOR DIAGNOSTIC OR THERAPEUTIC USE.



Cell Sciences®
65 Parker Street
Unit 11
Newburyport, MA 01950

Toll Free: 888-769-1246
Phone: 978-572-1070
Fax: 978-992-0298

E-mail: info@cellsciences.com
Website: www.cellsciences.com