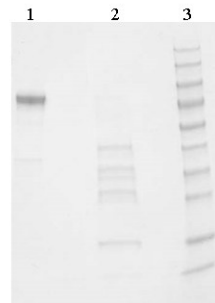


KLK1

Native Human Kallikrein, Plasma

Catalog No.	CSI19814A CSI19814B	Quantity:	1.0 mg 5.0 mg
Alternate Names:	KLKR		
Description:	Activation of Prekallikrein with Factor alpha-XIIa produces the enzymatically active Kallikrein. Kallikrein is a serine protease which consists of a heavy chain (Mr 52kD) and light chains (Mr either 36 or 33 kD) linked by disulfide bridges. Kallikrein possesses enzymatic activity toward Factor XII, HK, Plasminogen, Factors XI, IX, and VII, prorenin and the complement system. After activation, the activating enzyme Factor XIIa is removed by affinity chromatography.		
UniProt ID:	P03952		
Gene ID:	3818		
Source:	Human plasma		
Molecular Weight:	86 - 88 kDa		
Formulation:	4 mM sodium acetate, 150 mM sodium chloride, pH 5.3		
Purity:	>95% by SDS-PAGE analysis, with complete reduction upon incubation with 2-mercaptoethanol		
Concentration:	≥ 1.0 mg/ml, lot specific		
Extinction Coefficient:	$E^{0.1\%}_{280\text{nm}} = 1.17$		
Storage & Stability:	Store at -80°C for up to 1 year. Upon initial thaw, prepare working aliquots and store at -80°C. Avoid repeated freeze-thaw cycles.		
Statement:	Prepared from plasma found negative by FDA accepted methods for Anti-HIV1/2, Anti-HTLV I & II, HBsAg, Anti-HCV, Syphilis, HBC Ab, HIV-1 p24 Ag or HIV-1 RNA, HCV RNA and HBV RNA. Donors are screened for CJD (Creutzfeldt-Jakob Disease).		



1. Human Kallikrein (3 ug) NR
2. Human Kallikrein (3 ug) R
3. Molecular Weight Markers

NOT FOR HUMAN USE. FOR RESEARCH ONLY. NOT FOR DIAGNOSTIC OR THERAPEUTIC USE.

