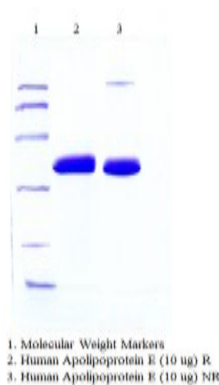


APOE

Native Human Apolipoprotein E, Plasma VLDL

Catalog No.	CSI19787A CSI19787B	Quantity:	50 µg 100 µg
Alternate Names:	Apo-E		
Description:	<p>Apolipoprotein E (APOE), a main apoprotein of the chylomicron, binds to a specific receptor on liver cells and peripheral cells. APOE serves as a ligand for low density receptors and participates in the transport and redistribution of cholesterol and other lipids. Other functions include immunoregulation and cell growth modulation and differentiation. APOE is thought to be involved in tissue repair as increased amounts of the protein are found at sites of peripheral nerve injury and regeneration. APOE is essential for the normal catabolism of triglyceride-rich lipoprotein constituents. Defects in APOE result in familial dysbetalipoproteinemia, or type III hyperlipoproteinemia (HLP III), in which increased plasma cholesterol and triglycerides are the consequence of impaired clearance of chylomicron and VLDL remnants. The concentration of APOE in normal plasma is 5 mg per 100 mL.</p>		
UniProt ID:	P02649		
Gene ID:	348		
Source:	Human Plasma, fresh non-frozen		
Molecular Weight:	34 kDa		
Formulation:	Solution of 50 mM Ammonium Bicarbonate, pH 8.0		
Purity:	>95% by SDS-PAGE analysis		
Concentration:	≥ 1.0 mg/ml, lot specific		
Extinction Coefficient:	$E^{0.1\%}_{280\text{nm}} = 1.31$		
Storage & Stability:	Store at -80°C for up to 1 year. Upon initial thaw, prepare working aliquots and store at -80°C. Avoid repeated freeze-thaw cycles.		
Certification:	Prepared from plasma shown to be non reactive for HbsAG, anti-HCV, anti-HBc, negative for anti-HIV 1 & 2 by FDA approved tests.		



cellsciences.com

NOT FOR HUMAN USE. FOR RESEARCH ONLY. NOT FOR DIAGNOSTIC OR THERAPEUTIC USE.



Cell Sciences®
65 Parker Street
Unit 11
Newburyport, MA 01950

Toll Free: 888-769-1246
Phone: 978-572-1070
Fax: 978-992-0298

E-mail: info@cellsciences.com
Website: www.cellsciences.com