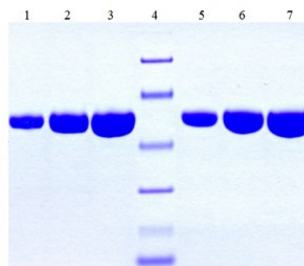


## SERPINA1

### Native Human Alpha-1-Antitrypsin

|                                 |  |                  |                  |
|---------------------------------|--|------------------|------------------|
| <b>Catalog No.</b>              | CSI19775A<br>CSI19775B   | <b>Quantity:</b> | 1.0 mg<br>5.0 mg |
| <b>Alternate Names:</b>         | Alpha-1-Antitrypsin, Alpha-1 protease inhibitor, Alpha-1-antiproteinase, Serpin A1   |                  |                  |
| <b>Description:</b>             | Alpha 1-Antitrypsin (SERPINA1) is a glycoprotein serine protease inhibitor (serpin), inhibiting a wide variety of proteases. An acute-phase plasma protein found at 95-350 mg per 100 ml that functions as a protease inhibitor. Clinically, its deficiency is associated with two major diseases: pulmonary emphysema and early onset/juvenile hepatic cirrhosis. It is elevated in inflammatory conditions, malignancies, liver disease and pregnancy and also after surgical trauma and use of oral contraceptives. |                  |                  |
| <b>UniProt ID:</b>              | P01009   |                  |                  |
| <b>Gene ID:</b>                 | 5265   |                  |                  |
| <b>Purity:</b>                  | >95% by SDS-PAGE   |                  |                  |
| <b>Molecular Weight:</b>        | 52 kDa   |                  |                  |
| <b>Source:</b>                  | Human Plasma   |                  |                  |
| <b>Extinction Coefficient:</b>  | $E^{0.1\%}_{280\text{ nm}} = 0.433$  |                  |                  |
| <b>Formulation:</b>             | Lyophilized from 0.03 M Sodium Phosphate, 0.3 M NaCl, pH 6.5   |                  |                  |
| <b>Reconstitution:</b>          | <b>Centrifuge vial prior to opening.</b> Add deionized water to $\geq 0.1$ mg/ml.  |                  |                  |
| <b>Biological Activity:</b>     | 75-100% inhibitory when tested with active-site titrated Porcine Pancreatic Trypsin using N-Benzoyl-L-Arginine-para-Nitroanilide Hydrochloride (L-BAPNA) as substrate.   |                  |                  |
| <b>Storage &amp; Stability:</b> | Store in working aliquots at -80°C. <b>Avoid repeated freeze-thaw cycles.</b>  |                  |                  |
| <b>Certification:</b>           | Donors shown to be non reactive for HbsAG, anti-HCV, anti-HBc, and negative for anti-HIV 1 & 2 by FDA approved tests.  |                  |                  |



1. Human Alpha-1-Antitrypsin (5 ug) R  
 2. Human Alpha-1-Antitrypsin (10 ug) R  
 3. Human Alpha-1-Antitrypsin (20 ug) R  
 4. Molecular Weight Markers  
 5. Human Alpha-1-Antitrypsin (5 ug) NR  
 6. Human Alpha-1-Antitrypsin (10 ug) NR  
 7. Human Alpha-1-Antitrypsin (20 ug) NR

**NOT FOR HUMAN USE. FOR RESEARCH ONLY. NOT FOR DIAGNOSTIC OR THERAPEUTIC USE.**