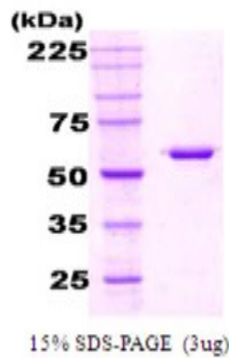


## HSPD1

### Recombinant Human GroES/Heat Shock 60 kDa Protein 1

<b>Catalog No.</b>	CSI15607A CSI15607B	<b>Quantity:</b>	100 µg 500 µg
<b>Alternate Names:</b>	CPN60, GROEL, HLD4, HSP60, HSP65, HuCHA60, SPG13, P60 lymphocyte protein, chaperonin, heat shock 60kD protein 1 (chaperonin), heat shock protein 65, mitochondrial heat shock 60kD protein 1 variant 1, mitochondrial matrix protein P1, short heat shock protein 60 Hsp60s1, spastic paraplegia 13 (autosomal dominant)		
<b>Description:</b>	GroEL protein is the major heat shock protein of <i>E. coli</i> and belongs to the chaperonin (HSP60) family. GroEL protein prevents misfolding of proteins and promotes the refolding and proper assembly of unfolded polypeptides generated under stress condition. GroEL gene was amplified by PCR from <i>E. coli</i> and cloned into an expression vector. This protein was overexpressed in <i>E. coli</i> and was purified by using conventional chromatography techniques.		
<b>Concentration:</b>	1 mg/ml (determined by Bradford assay)		
<b>Gene ID:</b>	3329		
<b>Protein Accession No:</b>	NP_418567		
<b>Source:</b>	<i>E. coli</i>		
<b>Molecular Weight:</b>	57.3 kDa (548 aa), confirmed by MALDI-TOF		
<b>Formulation:</b>	Liquid. In 25 mM Tris buffer (pH 7.5) containing 100 mM NaCl + 5 mM DTT, 10% glycerol		
<b>Purity:</b>	> 95% by SDS - PAGE		
<b>Amino Acid Sequence:</b>	MAAKDVKFGN DARVKMLRGV NVLADAVKVT LGPKGRNVVL DKSFSGAPTIT KDGVSVAREI ELEDKFENMG AQMVKEVASK ANDAAGDGTT TATVLAQAI TEGLKAVAAG MNPMDLKRGI DKA VTA AVEE LKALSVP CSD SKAIAQVGTI SANSDETVGK LIAEAMDKVG KEGVITVEDG TGLQDEL DVV EGMQFDRGYL SPYFINKPET GAVELESPFI LLADKKISNI REMLPVLEAV AKAGKPLLI AEDVEGEALA TLVVNTMRGI VKVA AVKAPG FGDRRKAMLQ DIATLTGGTV ISEEIGMELE KATLEDLGQA KRVVINKDTT TIIDGVGEEA AIQGRVAQIR QQIEEATSDY DREKLQERVA KLAGGVAVIK VGAATEVEMK EKKARVEDAL HATRAAVEEG VVAGGGVALI RVASKLADLR GQNE DQNVGI KVALRAMEAP LRQIVLNCGE EPSVVANTVK GGDGNYGYNA ATEEYGNMID MGILDPTKVT RSALQYAASV AGLMITTECM VTDLPKNDA DLGAAGGMGG MGGMGGMM		
<b>Storage &amp; Stability:</b>	Can be stored at +4°C short term (1-2 weeks). For long term storage, aliquot and store at -20°C or -80°C. <b>Avoid repeated freezing and thawing cycles.</b>		





NOT FOR HUMAN USE. FOR RESEARCH ONLY. NOT FOR DIAGNOSTIC OR THERAPEUTIC USE.



**Cell Sciences**<sup>®</sup>  
480 Neponset Street  
Bldg 12A  
Canton, MA 02021

Toll Free: 888-769-1246  
Phone: 781-828-0610  
Fax: 781-828-0542

E-mail: [info@cellsciences.com](mailto:info@cellsciences.com)  
Website: [www.cellsciences.com](http://www.cellsciences.com)