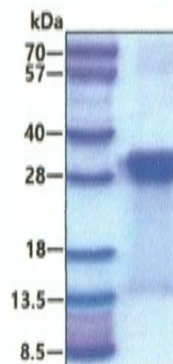


SNAP25

Recombinant Human SNAP25 His Tag

Catalog No.	CSI15602A CSI15602B	Quantity:	100 µg 500 µg
Alternate Names:	Synaptosomal-associated protein 25, SNAP-25, Super protein, SUP, Synaptosomal-associated 25 kDa protein		
Description:	Recombinant human SNAP25, amino acids 1-206, fused to His tag at N-terminus. The synaptosomal-associated protein 25 isoform (SNAP-25) is an essential component of the core complex that mediates presynaptic vesicle trafficking. Thus, SNAP-25 is directly involved in the release of neurotransmitters.		
UniProt ID:	P60880		
Gene ID:	6616		
Concentration:	1.0 mg/ml, by Bradford assay		
Source:	<i>E. coli</i>		
Molecular Weight:	25.4 kDa (226 aa) confirmed by MALDI-TOF		
Formulation:	50 mM HEPES, 100 mM NaCl, 5 mM DTT, pH 7.4		
Purity:	> 90% as determined by SDS PAGE analysis		
Amino Acid Sequence:	MGSSHHHHHH SSGLVPRGSH MAEDADMRNE LEEMQRRADQ LADESLESTR RMLQLVEESK DAGIRTLVML DEQGEQLERI EEGMDQINKD MKEAEKNLTD LGKFCGLCVC PCNKLKSSDA YKKA WGNNQD GVVASQPARV VDREQMAIS GGFIRRV TND ARENEMDENL EQVSGIIGNL RHMALDMGNE IDTQNRQIDR IMEKADSNKT RIDEANQRAT KMLGSG		
Storage & Stability:	May be stored at 2-8°C for 1 week. For long term storage, store in working aliquots at -20°C to -80°C. Avoid repeated freeze-thaw cycles.		

SDS-PAGE, 3 µg



NOT FOR HUMAN USE. FOR RESEARCH ONLY. NOT FOR DIAGNOSTIC OR THERAPEUTIC USE.