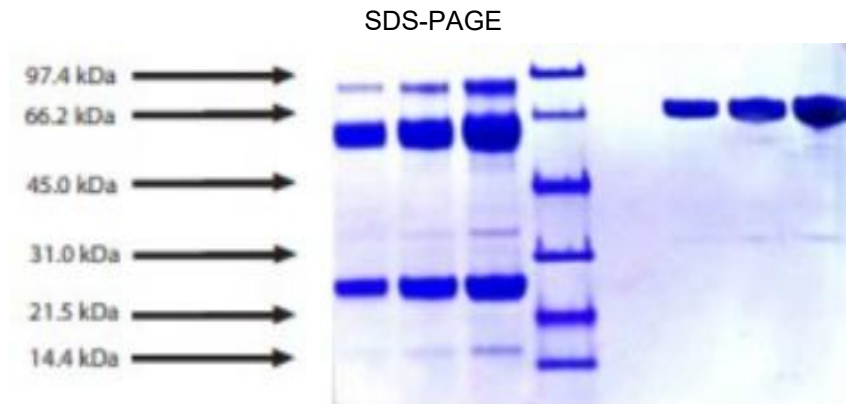


## PLG

### Native Human Plasmin

|                                 |   |                  |      |
|---------------------------------|---|------------------|------|
| <b>Catalog No.</b>              | CSI14696A   | <b>Quantity:</b> | 1 mg |
| <b>Description:</b>             | Plasmin functions in fibrinolysis, fibrinogenolysis, as well as in the complement cascade. This protease has been prepared by using streptokinase to activate human plasma plasminogen. |                  |      |
| <b>UniProt ID:</b>              | P00747  |                  |      |
| <b>Source:</b>                  | Human plasma  |                  |      |
| <b>Molecular Weight:</b>        | 81 kDa  |                  |      |
| <b>Formulation:</b>             | 100 mM NaPO <sub>4</sub> , pH 7.3 containing 1 mM 6-aminohexanoic acid and 25% glycerol.<br><b>Also available lyophilized.</b>  |                  |      |
| <b>Purity:</b>                  | ≥ 90% by SDS-PAGE   |                  |      |
| <b>Extinction Coefficient:</b>  | $E^{0.1\%}_{280\text{nm}} = 1.71$   |                  |      |
| <b>Biological Activity:</b>     | One unit is defined as the amount of enzyme that hydrolyzes one umole of tosyl-Gly-Pro-Lys-pNA per minute at 25°C, pH 7.8.<br>Note: One unit = 1.25 CU                                  |                  |      |
| <b>Specific Activity:</b>       | ≥ 15 units/mg protein, lot specific   |                  |      |
| <b>Storage &amp; Stability:</b> | Store unopened at -80°C for up to 1 year. Upon reconstitution, store aliquots at -80°C. <b>Avoid repeated freeze-thaw cycles.</b>   |                  |      |
| <b>Biohazard:</b>               | Prepared from raw materials shown to be non-reactive for HBsAg, anti-HCV, anti-HBc, and negative for anti-HIV 1&2 by FDA approved methods.  |                  |      |



NOT FOR HUMAN USE. FOR RESEARCH ONLY. NOT FOR DIAGNOSTIC OR THERAPEUTIC USE.

