

IGA

Native Human Secretory Immunoglobulin A (SIgA), Colostrum

Catalog No.	CSI11999A	Quantity:	1 mg
	CSI11999B		5 mg
	CSI11999C		10 mg

Alternate Names: Immunoglobulin alpha, SIgA

Description: Secretory Immunoglobulin A (SIgA) is the primary immunoglobulin on most mucosal surfaces made of two IgA monomers, a connecting J chain, and the secretory component (SC). The SC protects the secretory IgA complex from proteases present in the mucosal environment. Secretory IgA serves several functions, including neutralization of viruses and exotoxin, enhancement of lactoferrin and lactoperoxidase activities, and inhibition of microbial growth. Because dimeric IgA is able to bind two antigens simultaneously, it is capable of forming large antigen-antibody complexes that neutralizes microbes and facilitates their removal.

Source: Human colostrum

Molecular Weight: 385 kDa

Formulation: 20 mM Sodium phosphate, 150 mM NaCl, pH 7.4

Purity: > 95% by SDS-PAGE

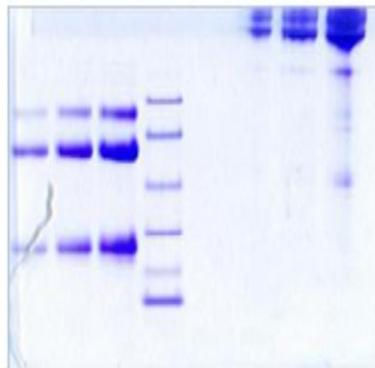
No reaction by IEP with antiserum to human Albumin, IgD, IgE, IgG, IgM and Lactoferrin

Extinction Coefficient: $E^{0.1\%}_{280\text{nm}} = 1.26$

Storage & Stability: Store as supplied at -20°C to -80°C for up to 1 year.

Infectious Disease Statement: Prepared from human colostrum shown to be non reactive for HBsAg, anti-HCV, anti-HBc, and negative for anti-HIV 1 & 2 by FDA-required tests.

SDS-PAGE
Reduced and non-reduced



NOT FOR HUMAN USE. FOR RESEARCH ONLY. NOT FOR DIAGNOSTIC OR THERAPEUTIC USE.

