

Native Human Inter Alpha Inhibitor Proteins (IAIP), Plasma

Catalog No.	CSI11993A	Quantity:	25 µg
	CSI11993B		100 µg
	CSI11993C		1.0 mg

Description: Inter Alpha Inhibitor Proteins (Ialp) include Inter Alpha Trypsin Inhibitor (Ial) and Pre Alpha Inhibitor (Pal), with molecular weights of 225 kDa and 125 kDa respectively. Together these proteins are present in plasma at a concentration of approximately 50 mg/100 ml. The inhibitory activity of the proteins is a function of bikunin, the common light chain of the IAIP.

In acute inflammation, the Ial acts as a negative acute-phase protein, whereas the Pal acts as a positive acute-phase protein. Ialp are being considered as biomarkers and biotherapies for metastatic disease, septic shock and complement system disorders.

Source: Human plasma

Molecular Weight: 225 kDa and 125 kDa

Formulation: PBS

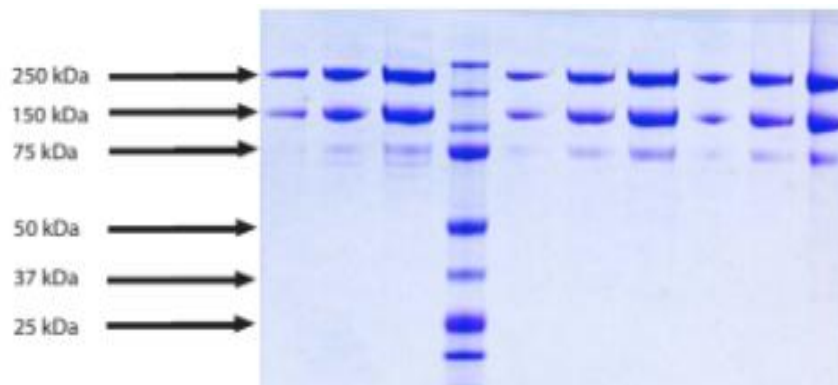
Purity: ≥ 90% by SDS-PAGE analysis
Immunoblotting: immunoreactive with anti-Bikunin

Biological Activity: Demonstrates inhibitory activity when tested with active-site titrated porcine pancreatic trypsin using Na-Benzoyl-L-Arginine-para-Nitroanilide Hydrochloride (L-BAPNA) as substrate.

Storage & Stability: Store at -80°C for up to 1 year. Upon initial thaw, prepare working aliquots and store at -80°C. **Avoid repeated freeze-thaw cycles.**

Infectious Disease Statement: The protein is derived from plasma that has been shown to be non reactive for HbsAG, anti-HCV, anti-HBc, and negative for anti-HIV 1 & 2 by FDA approved tests.

SDS-PAGE: 4-12% Bis-Tris-HCl NuPAGE



NOT FOR HUMAN USE. FOR RESEARCH ONLY. NOT FOR DIAGNOSTIC OR THERAPEUTIC USE.