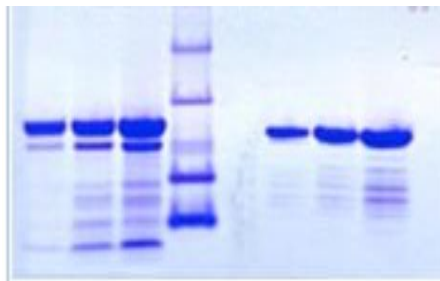


## CELA1

### Native Porcine Pancreatic Elastase-1, High Purity

<b>Catalog No.</b>	CRP262A CRP262B	<b>Quantity:</b>	250 U 1000 U
<b>Alternate Names:</b>	Chymotrypsin-like elastase family member 1, Elastase-1		
<b>Description:</b>	Porcine Pancreatic Elastase-1 was chromatographically prepared from the euglobin fraction of porcine pancreas by the method of Lewis et al. then twice crystallized for a high purity product.		
<b>UniProt ID:</b>	P00772		
<b>Gene ID:</b>	396766		
<b>Source:</b>	Porcine pancreatin from pancreas		
<b>Molecular Weight:</b>	25 kDa		
<b>Formulation:</b>	Lyophilized from 1 mM Acetic acid containing 50 mM Trehalose		
<b>Purity:</b>	2X crystallized preparation < 0.2% chymotrypsin		
<b>Extinction Coefficient:</b>	$E^{0.1\%}_{280\text{nm}} = 2.02$		
<b>Specific Activity:</b>	>50 units/mg, lot specific One unit will hydrolyze 1 $\mu$ mole of the substrate Suc-Ala-Ala-Ala-pNA per minute at pH 8.3 and 25°C.		
<b>Reconstitution:</b>	<b>Centrifuge vial prior to opening.</b> Reconstitute with 0.05M Na Acetate, 0.1M NaCl pH 5.0 to 1 mg/ml or desired concentration, aliquot and store at -20°C to -80°C.		
<b>Storage &amp; Stability:</b>	Store lyophilized at -20°C to -80°C for at least 1 year.		

SDS-PAGE: 4-12% Bis-Tris NuPAGE  
reduced and non-reduced



NOT FOR HUMAN USE. FOR RESEARCH ONLY. NOT FOR DIAGNOSTIC OR THERAPEUTIC USE.



Cell Sciences®  
65 Parker Street  
Unit 11  
Newburyport, MA 01950

Toll Free: 888-769-1246  
Phone: 978-572-1070  
Fax: 978-992-0298

E-mail: [info@cellsciences.com](mailto:info@cellsciences.com)  
Website: [www.cellsciences.com](http://www.cellsciences.com)