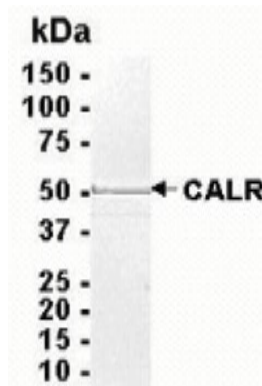


CALR

Recombinant Human Calreticulin

Catalog No.	CRC203	Quantity:	50 µg
Alternate Names:	Calreticulin, CRP55, Calregulin, Endoplasmic reticulum resident protein 60, ERp60, HACBP, grp60		
Description:	Calreticulin is a multifunctional protein that acts as a major Ca(2+)-binding (storage) protein in the lumen of the endoplasmic reticulum. It is also found in the nucleus, suggesting that it may have a role in transcription regulation. Calreticulin binds to the synthetic peptide KLGFFKR, which is almost identical to an amino acid sequence in the DNA-binding domain of the superfamily of nuclear receptors. Calreticulin binds to antibodies in certain sera of systemic lupus and Sjogren patients which contain anti-Ro/SSA antibodies, it is highly conserved among species, and it is located in the endoplasmic and sarcoplasmic reticulum where it may bind calcium.		
UniProt ID:	P27797		
Gene ID:	811		
Source:	<i>E. coli</i>		
Molecular Weight:	46.0 kDa (aa 18-417)		
Formulation:	10 mM Tris, 3 mM NaCl, pH 8.0 containing 0.002% sodium azide		
Purity:	90% by SDS-PAGE		
Applications:	Western Blot, ELISA, Mass Spectrometry		
Storage & Stability:	Store at -80°C for up to 1 year. Upon initial thaw, store single use aliquots at -80°C.		

4-20% gradient SDS-PAGE with Coomassie blue



NOT FOR HUMAN USE. FOR RESEARCH ONLY. NOT FOR DIAGNOSTIC OR THERAPEUTIC USE.

