

Human GM-CSF ELISPOT Kit with Sterile PVDF Plates

Catalog No: CKH013A
CKH013B

Lot: xxxxxxxx

Size: 2-plate format
5-plate format

Expiration Date: xx.xx.xxxx

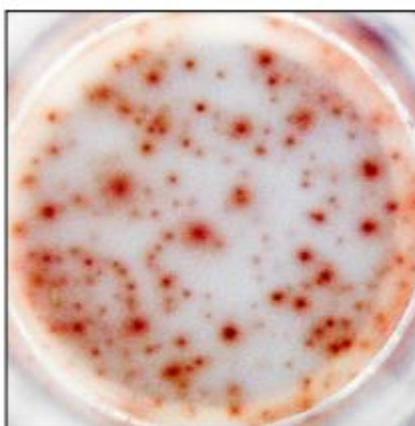
Contents of the kit:

Catalog #	Item	Storage Temp.	Quantity (2-plate format)	Quantity (5-plate format)
CKH013-A	Coating antibody (lyophilized)	4°C	1 vial	1 vial
CKH013-B	Biotinylated detection antibody (lyophilized)	4°C	1 vial	1 vial
CKH013-C	Streptavidin-HRP conjugate (lyophilized)	≤-20°C	1 vial	1 vial
	AEC coloring system:			
CKH013-D	I. AEC stock solution	≤-20°C (in dark)	1 vial (4 ml)	1 vial (4 ml)
CKH013-E	II. Substrate buffer capsule	RT	1 vial (2.5 ml)	1 vial (5 ml)
CKH013-F	Blocking stock solution (10x)	4°C	1 vial (4 ml)	1 vial (10 ml)
CKH013-G	Dilution buffer R (10x)	4°C	1 vial (4 ml)	1 vial (10 ml)
CKH013-H	Tween-20	RT	1 vial (5 ml)	1 vial (5 ml)
CKH013-P	Sterile 96-well PVDF plate (Millipore MSIPS4510)	RT	2	5
CKH013-S	Adhesive cover slip	RT	5	10

Typical data for CKH013



Stimulus: none (4×10^5 cells/well)



Stimulus: PMA/ionomycin (1×10^4 cells/well)

Example of GM-CSF specific spots produced by human PBMC.
Preincubation: 42h, incubation ELISPOT: 20h.

NOT FOR HUMAN USE. FOR RESEARCH ONLY. NOT FOR DIAGNOSTIC OR THERAPEUTIC USE.



Cell Sciences, Inc.
65 Parker Street
Unit 11
Newburyport, MA 01950

Toll Free: 888-769-1246
Phone: 978-572-1070
Fax: 978-992-0298

E-mail: info@cellsciences.com
Web Site: www.cellsciences.com

cellsciences.com



Cell Sciences, Inc.
65 Parker Street
Unit 11
Newburyport, MA 01950

Toll Free: 888-769-1246
Phone: 978-572-1070
Fax: 978-992-0298

E-mail: info@cellsciences.com
Web Site: www.cellsciences.com