

## GFRA2

### Rabbit Anti-Human GFR alpha-2 pAb

<b>Catalog No.</b>	PX195A	<b>Quantity:</b>	100 µg
	PX195B		0.5 mg

**Description:** Rabbit Anti-Human GFR alpha-2 pAb.

Members of the glial cell line-derived neurotrophic factor (GDNF) family, including GDNF and neurturin (NTN), play key roles in the control of vertebrate neuron survival and differentiation. Physiological responses to NTN require the presence of a novel glycosylphosphatidylinositol linked protein NTN $\alpha$ , which is a cell surface receptor for NTN. The cDNAs encoding NTN $\alpha$  from human, rat, chicken, and mouse have been cloned recently. NTN $\alpha$  was also termed GDNFR $\beta$ , Ret ligand 2 (RETL2) or TGF $\beta$ -related neurotrophic factor receptor 2 (TrnR2) and nominated as GFR $\alpha$ -2 recently. GFR $\alpha$ -2 binds NTN and mediates activation of RET receptor tyrosine kinase by both NTN and GDNF. Thus, NTN, GFR $\alpha$ -2, and the Ret PTK form a complex to transduce NTN signal and to mediate NTN function.

**Gene ID:** 2675

**Host:** Rabbit

**Immunogen:** Recombinant Human GFR alpha-2 peptide corresponding to amino acids near the center of human GFR alpha-2. The amino acid sequences of the immunogenic peptide are identical to those of mouse and rat.

**Isotype:** IgG

**Formulation:** Lyophilized in PBS + 0.02% Sodium Azide. Precaution: Sodium Azide is a poisonous and hazardous substance which should be handled by trained staff only.

**Applications:** ELISA, Western blot, and Immunocytochemistry.

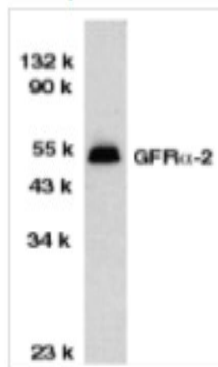
Can be used for detection of GFR alpha-2 by Western Blot at 0.5 - 1.0 µg/ml. HeLa whole lysate can be used as a positive control and a 52 kDa band should be detected. GFR alpha-2 antibody is human, mouse, and rat reactive.

GFR alpha-2 has been tested by immunocytochemistry using antibody at 5 µg/ml. The optimal concentration should be determined by the user for each specific application.

**Storage & Stability:** Stable at 2-4°C for 3 months. For longer storage, store at -20°C for up to one year. **Avoid repeated freeze-thaw cycles.**

Western blot analysis of GFR alpha-2 in HeLa total cell lysate with GFR alpha-2 antibody at 1:1,000 dilution.





NOT FOR HUMAN USE. FOR RESEARCH ONLY. NOT FOR DIAGNOSTIC OR THERAPEUTIC USE.



**Cell Sciences**<sup>®</sup>  
480 Neponset Street  
Bldg 12A  
Canton, MA 02021

Toll Free: 888-769-1246  
Phone: 781-828-0610  
Fax: 781-828-0542

E-mail: [info@cellsciences.com](mailto:info@cellsciences.com)  
Website: [www.cellsciences.com](http://www.cellsciences.com)