

GSK3B

Mouse Anti-Human Glycogen Synthase Kinase 3 beta Clone 1F7 mAb

Catalog No.	CSI15580A	Quantity:	50 µl
	CSI15580B		100 µl

Alternate Names: GSK3 beta isoform, glycogen synthase kinase-3 beta

Description: Glycogen synthase kinase 3beta (GSK3beta) is a serine/threonine kinase involved in insulin, growth factor and Wnt signaling. Glycogen synthase kinase 3beta (GSK3beta) is a molecular regulator of cell fate in the central nervous system and a target of the phosphatidylinositol 3-kinase (PI3k) pathway. It is an enzyme with a diverse number of actions in intracellular signaling systems, regulating neuronal plasticity, gene expression and cell survival.

Concentration: 1 mg/ml

Gene ID: 2932

Protein Accession No.: NP_002084

Host: Mouse

Immunogen: Recombinant human GSK3 beta (341-420 aa) purified from *E. coli*

Isotype: Mouse IgG₁ heavy chain and κ light chain

Clone: Anti-human GSK3beta mAb, clone 1F7, is derived from hybridization of mouse SP2/O myeloma cells with spleen cells from BALB/c mice immunized with a recombinant human GSK3beta protein.

Conjugate: Unconjugated

Formulation: Liquid. Supplied in Phosphate-Buffered Saline (pH 7.4) with 0.1% Sodium Azide.
Precaution: Sodium azide is a poisonous and hazardous substance which should be handled by trained staff only.

Purification: By protein-G affinity chromatography

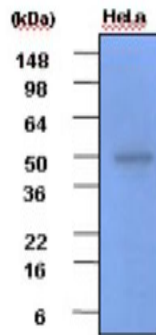
Cross-Reactivity: Human

Applications: ELISA, WB (Cell lysate)



Storage & Stability: Can be stored at +4°C. For long term storage, aliquot and store at -20°C. **Avoid repeated freezing and thawing cycles.**

Cell lysates of HeLa(30ug) were resolved by SDS-PAGE, transferred to PVDF membrane and probed with anti-human GSK3beta (1:2000). Proteins were visualized using a goat anti-mouse secondary antibody conjugated to HRP and an ECL detection system.



NOT FOR HUMAN USE. FOR RESEARCH ONLY. NOT FOR DIAGNOSTIC OR THERAPEUTIC USE.