

CEBPB

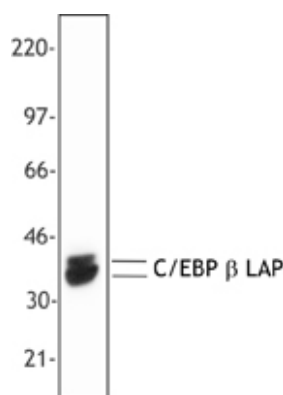
Mouse Anti-Mouse CCAAT/Enhancer Binding Protein beta Clone A16 mAb

Catalog No.	CSI14294 CSI14295	Quantity:	25 µg 100 µg
Alternate Names:	C/EBPbeta, CRP2, IL-6DBP, LAP, NF-IL6, NF-M, Nfil6, C/EBP BETA, CCAAT/enhancer binding protein beta, nuclear protein Il6		
Description:	C/EBP β (also known as CCAAT/enhancer-binding protein beta, interleukin 6-dependent DNA-binding protein, and nuclear factor of interleukin 6 [NF-IL6]) is a member of the basic leucine zipper C/EBP transcription factor family. C/EBP has three isoforms that include C/EBPβ, LAP, and LIP (35 kD, 32 kD, and 20 kD, respectively). This protein is localized in the nucleus and functions as a transcription factor in immune, inflammatory, acute-phase, cytokine, collagen type I gene expression. It is upregulated by growth hormones and has been shown to interact with CEBP-α, CEBP-δ, CEBP-γ, CEBP-ε, and CEBP-ζ. The C/EBP β protein is known to be modified by phosphorylation and ubiquitination. The A16 monoclonal antibody has been shown to be useful for Western blotting of the mouse 35 kD and 32 kD LAP C/EBP β isoform.		
Concentration:	0.5 mg/ml		
Gene ID:	12608		
Structure:	C/EBP transcription factor family, basic leucine zipper, dimer. Isoforms C/EBPβ, LAP, LIP, approximately 35 kD, 32 kD, 20 kD, respectively.		
Distribution:	Nuclear		
Host:	Mouse		
Immunogen:	Recombinant full length mouse C/EBP β protein		
Isotype:	IgG1, κ		
Clone:	A16		
Function:	Transcription factor in immune, inflammatory, acute-phase, cytokine, collagen type I genes.		
Formulation:	This antibody is provided in phosphate-buffered solution, pH 7.2, containing 0.09% sodium azide. Final antibody concentration is 0.5 mg/ml. Precaution: Sodium azide is a poisonous and hazardous substance which should be handled by trained staff only.		
Purification:	The antibody was purified by protein G affinity chromatography		
Regulation:	Growth hormone		



- Reactivity:** Mouse (recognizes 35 and 32 kD LAP forms)
- Applications:** Western Blot
- Recommended Usage:** Each lot of this antibody is quality control tested by Western blotting. Western blotting, suggested working dilution(s): Use 5 µg antibody per 5 ml antibody dilution buffer for each mini-gel. It is recommended that the reagent be titrated for optimal performance for each application.
- Storage & Stability:** Upon receipt, store at 4° C.
- Modification:** Phosphorylation, Ubiquitination
- Interaction:** CEBP- α , CEBP- β , CEBP- δ , CEBP- γ , CEBP- ϵ , CEBP- ζ

Nuclear extracts from P388D1 (IL-1) were resolved by electrophoresis, transferred to nitrocellulose and probed with anti-C/EBP β (clone A16). Proteins were visualized using a goat anti-mouse secondary antibody conjugated to HRP and a chemiluminescence system. As shown, this antibody specifically recognizes the LAP isoform of C/EBP β .



NOT FOR HUMAN USE. FOR RESEARCH ONLY. NOT FOR DIAGNOSTIC OR THERAPEUTIC USE.

