

## CDC25A

### Rabbit Anti-Human Cell Division Cycle 25 homolog A Phospho-Ser17 Clone Poly6207 pAb

<b>Catalog No.</b>	CSI14286 CSI14287	<b>Quantity:</b>	50 µl 200 µl
<b>Alternate Names:</b>	CDC25A2, M-phase inducer phosphatase 1, cell division cycle 25A, dual specificity phosphatase CDC25A		
<b>Description:</b>	Cdc25A (also know as M-phase inducer phosphatase 1 and dual specificity phosphatase Cdc25A) is a 65 kD MPI phosphatase containing a rhodanese domain. This nuclear protein functions as a dosage-dependent inducer in mitotic control required for the progression of cell cycle. Cdc25A activates Cdc2 by dephosphorylation, dephosphorylates CDK2 in complex with cyclin E. Cdc25A is stimulated by cyclins B, downregulated by Chk1 and Cds1/Chk2 phosphorylation. This phosphatase has been shown to interact with Cdc2, cyclin B, Cdk2, Chk1, and Chk2. The Poly6207 antibody recognizes phosphorylated human Cdc25A (Ser17) and has been shown to be useful for Western blotting.		
<b>Concentration:</b>	0.5 mg/ml		
<b>Gene ID:</b>	993		
<b>Structure:</b>	MPI phosphatase, rhodanese domain; 65 kD.		
<b>Distribution:</b>	Nuclear		
<b>Host:</b>	Rabbit		
<b>Immunogen:</b>	Modified peptide		
<b>Isotype:</b>	IgG		
<b>Clone:</b>	Poly6207		
<b>Function:</b>	Dosage-dependent inducer of mitotic control required for progression of cell cycle. Activates Cdc2 by dephosphorylation; dephosphorylates CDK2 in complex with cyclin E.		
<b>Formulation:</b>	This antibody is provided in phosphate-buffered solution, pH 7.2, containing 0.09% sodium azide and 50% glycerol. <b>Precaution:</b> Sodium azide is a poisonous and hazardous substance which should be handled by trained staff only.		
<b>Purification:</b>	The antibody was peptide-purified by affinity chromatography.		
<b>Regulation:</b>	Stimulated by cyclin B, downregulated by Chk1 and Cds1/Chk2 phosphorylation.		
<b>Reactivity:</b>	Human, recognizes Ser17-phosphorylated Cdc25A		



**Applications:** Western Blot

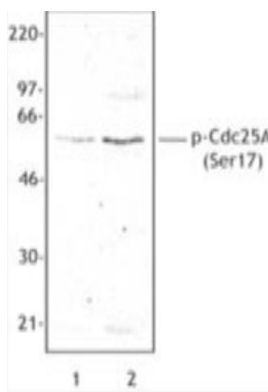
**Recommended Usage:** Each lot of this antibody is quality control tested by Western blotting. Western blotting, suggested working dilution(s): Use 10  $\mu$ l per 5 ml antibody dilution buffer for each mini-gel. It is recommended that the reagent be titrated for optimal performance for each application.

**Storage & Stability:** Upon receipt, store frozen at -20° C.

**Modification:** Phosphorylation

**Interaction:** Cdc2, cyclin B, Cdk2, Chk1, Chk2

Hela cells were treated with 300  $\mu$ M mimosine for 16 hrs, then placed in complete media (lane 1) or media containing 200 ng/ml nocodazole (lane 2) for an additional 18hrs. Nuclear extract was resolved by electrophoresis, transferred to nitrocellulose, and probed with rabbit polyclonal antibody reactive against phosphorylated Cdc25A (Ser17). Proteins were visualized using a donkey anti-rabbit secondary conjugated to HRP and a chemiluminescence detection system.



**NOT FOR HUMAN USE. FOR RESEARCH ONLY. NOT FOR DIAGNOSTIC OR THERAPEUTIC USE.**

