

GSK3B

Rabbit Anti-Human Glycogen Synthase Kinase 3 beta Clone Poly6042 Affinity Purified pAb

Catalog No.	CS112007	Quantity:	50 µl
	CS112008		200 µl

Alternate Names: GSK3beta isoform, glycogen synthase kinase-3 beta

Description: GSK-3β (glycogen synthase kinase-3 beta) is a 49 kD serine/threonine kinase that is a member of the CDC2/CDKX subfamily. This protein is expressed in the testis, thymus, prostate, and ovary, with weak expression in lung, brain, and kidney. GSK-3β is thought to participate in the insulin and Wnt signaling pathway and has been shown to phosphorylate c-jun to reduce DNA binding. GSK-3β can be modified by AKT phosphorylation which inhibits function. This protein has been shown to interact with axin and GBP/FRAT. The Poly6042 antibody recognizes human and mouse GSK-3β and is cross-reactive with GSK-3α. The Poly6042 antibody has been shown to be useful for Western blotting.

Modification: Phosphorylation

Gene ID: 2932

Regulation: Inhibited by AKT phosphorylation.

Distribution: Testis, thymus, prostate, ovary. Weak expression in lung, brain, kidney.

Host: Rabbit

Immunogen: Recombinant (partial) , C-terminal

Isotype: Rabbit IgG

Clone: Poly6042

Structure: Serine/Threonine family protein kinases, CDC2/CDKX subfamily, monomer; 49 kD.

Formulation: This antibody is provided in phosphate-buffered solution, pH 7.2, containing 0.09% sodium azide and 50% glycerol. **Precaution:** Sodium azide is a poisonous and hazardous substance which should be handled by trained staff only.

Purification: The antibody was purified by antigen-affinity chromatography.

Function: Participates in insulin and Wnt signaling pathway, phosphorylates c-jun to reduce DNA binding.

Reactivity: Mouse, Human, cross-reacts with GSK-3α

Applications: WB, IF

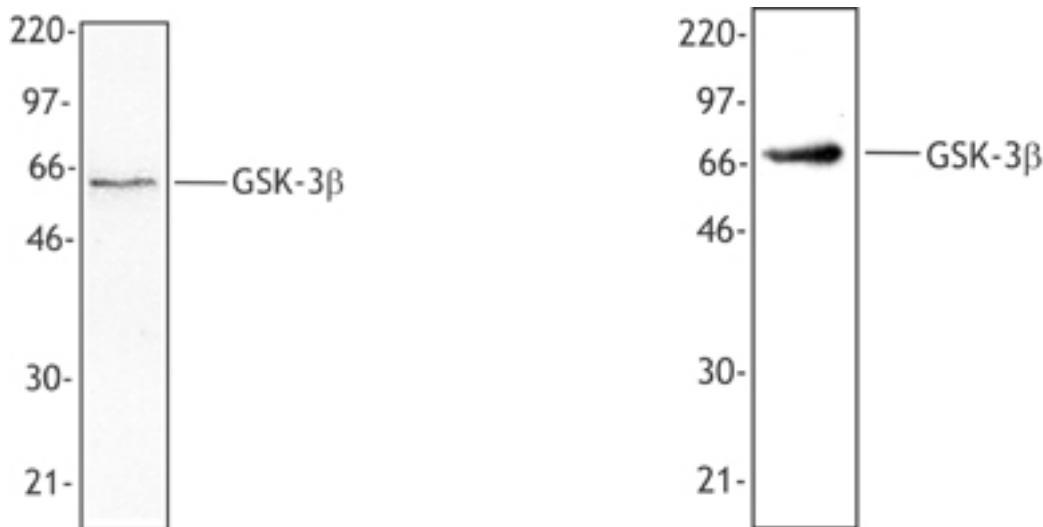


Recommended Usage: Each lot of this antibody is quality control tested by Western blotting. Western blotting, suggested working dilution(s): Use 10 μ l per 5 ml antibody dilution buffer for each mini-gel. It is recommended that the reagent be titrated for optimal performance for each application.

Storage & Stability: Upon receipt, store frozen at -20° C. **Avoid repeated freeze-thaw cycles.**

Hela cell extract was resolved by electrophoresis, transferred to nitrocellulose and probed with rabbit anti-GSK 3 β antibody. Proteins were visualized using a donkey anti-rabbit secondary conjugated to HRP and a chemiluminescence detection system.

Recombinant human full length GSK3 beat containing an N-terminal GST tag protein (400 ng per lane) was resolved by electrophoresis, transferred to nitrocellulose and probed with rabbit anti-GSK 3 β antibody. Proteins were visualized using a donkey anti-rabbit secondary conjugated to HRP and a chemiluminescence detection system.



NOT FOR HUMAN USE. FOR RESEARCH ONLY. NOT FOR DIAGNOSTIC OR THERAPEUTIC USE.

